



**The Quality Assurance Agency for Higher Education (QAA)**

## **Access to Higher Education statistics summary (2006-07)**

Jean McLaren, Information Development Officer

### **Introduction**

The information presented here summarises statistical data about the number and type of Access to Higher Education (HE) courses and students in the academic year 2006-07. Figures are derived from data received from the Access validating agencies (AVAs), the partnership organisations which are licensed by QAA to recognise Access to HE courses in England and Wales. There were 15 AVAs in 2006-07.

Where it is available, data for the last five years is presented. However, a number of new or revised categories were introduced in 2002-03, therefore a reliable time series is not available in all areas. Some changes also result from improved data collection or reporting, rather than real changes in the profile. Any assumptions about 'trends' should therefore be made with caution, especially where change is detected just between one year and another, or where numbers or percentage changes are relatively small.

The data presented provides an overview of Access to HE provision and is not intended to be used by organisations for setting internal targets or for benchmarking purposes.

Readers should note that learner data has been adjusted in line with QAA's rounding policy. Accordingly, numbers which relate to learners are rounded to the nearest five. Rounded totals are calculated from the raw data: as a result, some of the totals given here are not equivalent to the sum of the rounded constituent elements.

## 1 Providers involved in delivering Access to HE courses (see Table 1, below)

- There were **371** providers of Access to HE courses in 2006-07.
- Twenty-two Access to HE providers were in Wales: 349 were in England.
- About **83 per cent** of Access to HE courses were delivered in further education colleges (FECs).

There was a two per cent decrease in the number of participating providers recorded in 2006-07 compared to 2005-06 (from 380 to 371). Part of the decrease in the number of providers was accounted for by the reduced number of providing FECs in England (from 293 to 288). The remainder of the decrease was spread across the other categories, except adult/community education centres which increased from 22 in 2005-06 to 23 providers in 2006-07. The percentage of providers which are FECs increased to 83 per cent in 2006-07 from 82 per cent in 2005-06. The number of providers has decreased every year since 2002-03, with a total percentage decrease of 11 per cent.

**Table 1: providers offering Access to HE courses**

Providers	2002-03		2003-04		2004-05		2005-06		2006-07	
FECs	330	79%	334	81%	332	82%	311	82%	306	83%
HE institutions	20	5%	17	4%	13	3%	17	5%	16	4%
Sixth form colleges	17	4%	14	3%	15	4%	13	3%	12	3%
Adult/community ed	23	6%	22	5%	26	6%	22	6%	23	6%
Schools	3	1%	1	0%	0	0%	0	0%	n/a	n/a
Other	23	6%	22	5%	19	5%	17	4%	14	4%
<b>Total</b>	<b>416</b>		<b>410</b>		<b>405</b>		<b>380</b>		<b>371</b>	

## 2 Access to HE courses (see Table 2, below)

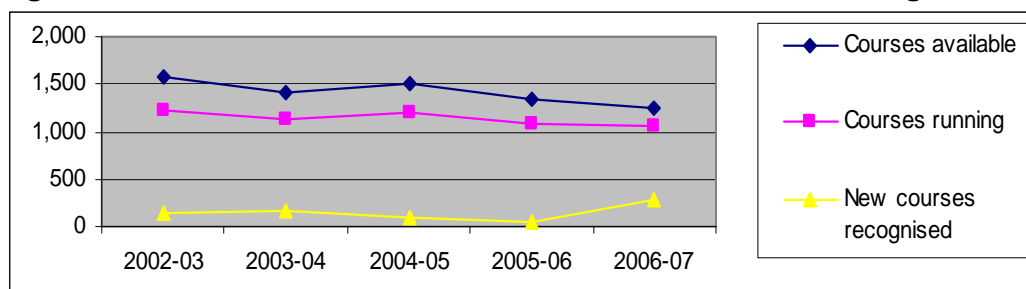
- There were **1,057** Access to HE courses running in 2006-07.
- Eighty-four Access to HE courses were in Wales: 973 were in England.

The number of courses running has decreased by 14 per cent since 2002-03 and the number of courses available follows a similar pattern. As a result of the introduction of the new Access to HE Diploma, there was a large increase in the number of new courses recognised during 2006-07, as existing courses were re-developed and newly validated as Diploma courses. Comparison with previous years is therefore misleading.

**Table 2: numbers of Access to HE courses available and running**

	2002-03	2003-04	2004-05	2005-06	2006-07
Courses available	1,568	1,407	1,506	1,341	1,258
<b>Courses running</b>	1,233	1,125	1,210	1,079	<b>1,057</b>
New courses recognised	147	166	88	50	286

**Figure A: numbers of Access to HE courses available and running**



### 3 Access to HE awards available (see Table 3, below)

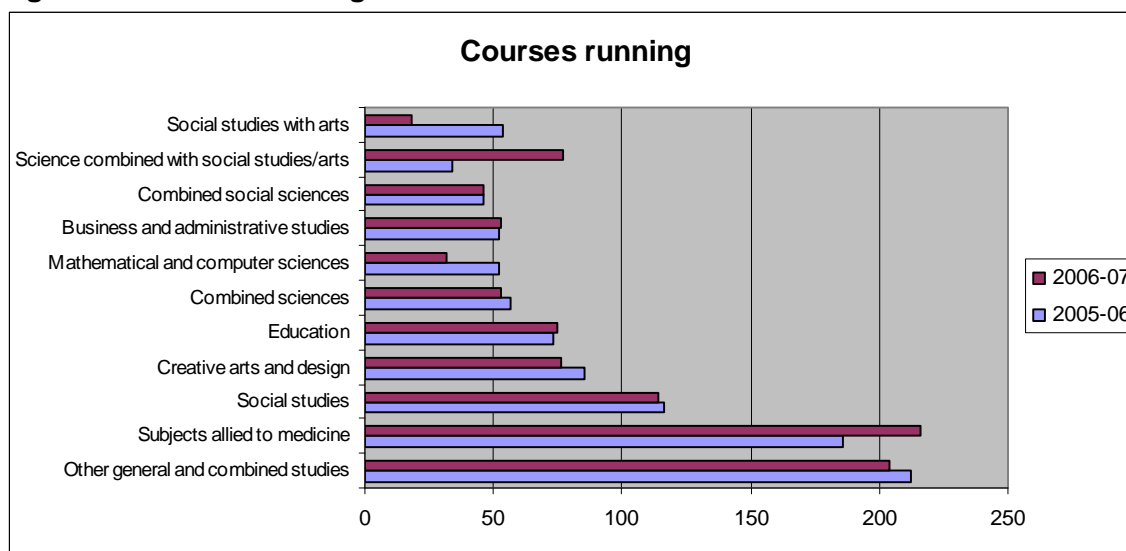
- The biggest changes in awards available between 2005-06 and 2006-07 were for Access to HE courses leading to:
  - science combined with social studies/arts (+45)
  - subjects allied to medicine (+31)
  - social studies with arts (-38)
  - creative arts and design (-23)
  - mathematical and computer sciences (-19)
  - social studies (-13).

Table 3 (below) presents data about the 11 subject areas with 40 or more courses available and running. The subject category with the highest number of courses available in 2006-07 was 'other general and combined studies'. (This category includes courses which have a number of separate, subject-specific pathways). The category with the highest number of courses running was 'subjects allied to medicine', which increased from 186 in 2005-06 to 216 courses running in 2006-07. This is the first year in which the area with most courses running was something other than 'other general and combined studies'. Most other subject areas showed decreases in the number of subjects available and running, except 'science combined with social studies/arts' and 'subjects allied to medicine' which showed increases in the number of subjects available and running between the two years.

**Table 3: Awards available and running (by designated progression route)**

	Courses available		Courses running		% all courses running 2006-07
	2005-06	2006-07	2005-06	2006-07	
Other general and combined studies	241	241	212	204	21%
<b>Subjects allied to medicine</b>	<b>199</b>	<b>230</b>	<b>186</b>	<b>216</b>	<b>22%</b>
<b>Social studies</b>	<b>146</b>	<b>133</b>	<b>116</b>	<b>114</b>	<b>12%</b>
<b>Creative arts and design</b>	<b>115</b>	<b>92</b>	<b>85</b>	<b>76</b>	<b>8%</b>
Education	90	90	73	75	8%
Combined sciences	77	69	57	53	5%
<b>Mathematical and computer sciences</b>	<b>76</b>	<b>57</b>	<b>52</b>	<b>32</b>	<b>3%</b>
Business and administrative studies	78	73	52	53	5%
Combined social sciences	56	50	46	46	5%
<b>Science combined with social studies/arts</b>	<b>37</b>	<b>82</b>	<b>34</b>	<b>77</b>	<b>8%</b>
<b>Social studies with arts</b>	<b>58</b>	<b>20</b>	<b>54</b>	<b>18</b>	<b>2%</b>

**Figure B: courses running for 2005-06 and 2006-07**



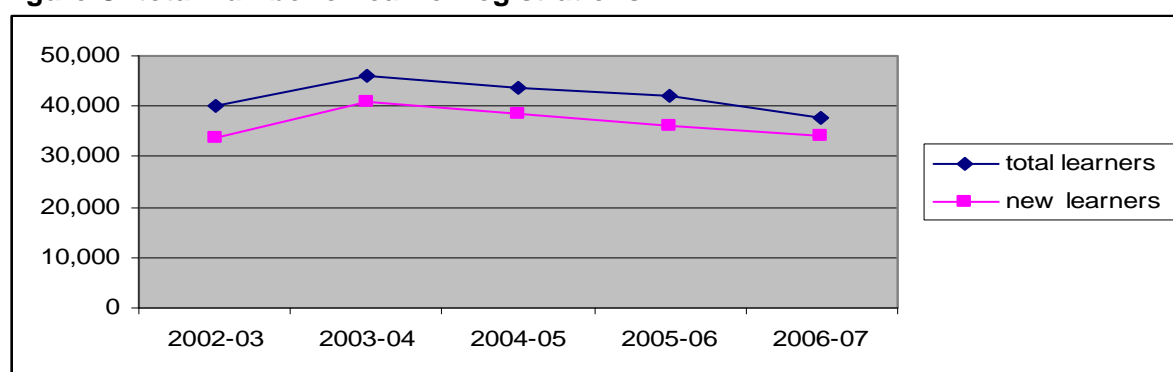
**4 Learner registrations on Access to HE courses (see Tables 4a and 4b, below)**

- There were **37,820** total learners registered on QAA-recognised Access to HE courses in 2006-07.
- There were 2,805 learners registered on QAA-recognised Access to HE courses in Wales: 35,015 in England.

**Table 4a: total number of learner registrations on Access to HE courses**

	2002-03	2003-04	2004-05	2005-06	<b>2006-07</b>
Learner registrations in England	38,045	43,790	41,450	39,120	35,015
Learner registrations in Wales	2,175	2,085	2,185	2,865	2,805
Total learner registrations	40,220	45,875	43,635	41,985	<b>37,820</b>
Total number of new learners registered	33,865	40,970	38,670	35,990	34,010

**Figure C: total number of learner registrations**



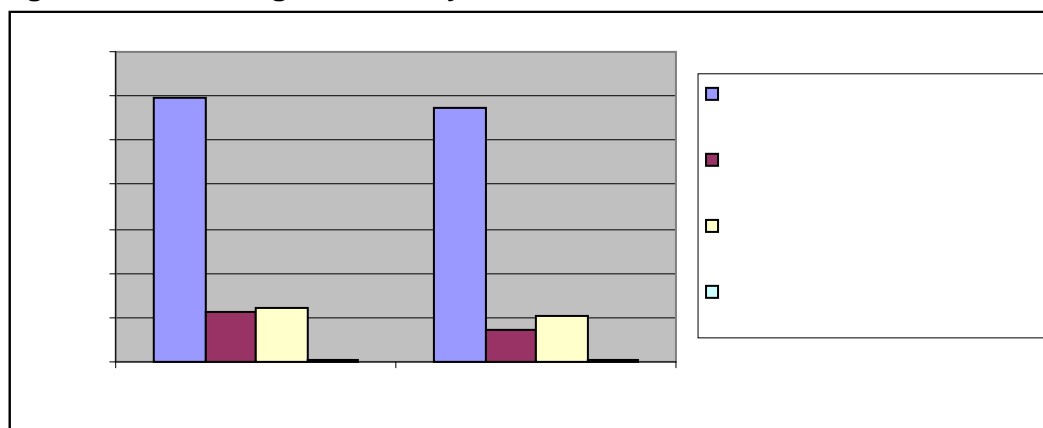
There was a decrease of 10 per cent in the number of Access to HE learner registrations in 2006-07 from the previous year. There was a smaller decrease in the number of new learner registrations, with a six per cent fall from 2005-06 to 2006-07.

- **32,265 (85%)** Access to HE learners in 2006-07 were registered to complete their courses within the same academic year.
- **2,170 (77%)** Access to HE learners in Wales were registered to complete their courses within the same academic year.

**Table 4b: learner registrations by end date**

	2005-06	2006-07
New learners registered: expected end date before 1 Aug	29,880 (71%)	<b>28,730 (76%)</b>
Re-registered: expected end date before 1 Aug	5,670 (14%)	<b>3,535 (9%)</b>
New learners registered: expected end date on/after 1 Aug	6,115 (15%)	5,280 (14%)
Re-registered: expected end date after 1 Aug	325 (1%)	275 (1%)

**Figure D: learner registrations by end date**



The fall in the total number of learners registered from 2005-06 to 2006-07 (see above) was reflected across all categories, but the largest decrease was in the category for number of learners who re-registered to complete within the same academic year, which fell by 38 per cent.

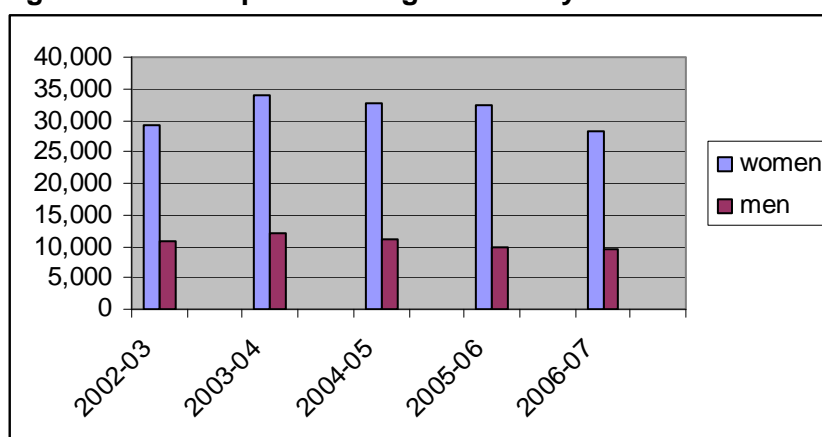
## 5 Learner profile at registration (see Tables 5a - 5e, below)

- **Seventy-four per cent** of Access to HE learners in 2006-07 **were women.**

**Table 5a: learner profile at registration (by sex)**

	2002-03		2003-04		2004-05		2005-06		2006-07	
women	29,280	73%	33,965	74%	32,680	75%	32,270	77%	<b>28,155</b>	<b>74%</b>
men	10,940	27%	11,910	26%	10,955	25%	9,715	23%	9,660	26%

**Figure E: learner profile at registration by sex**



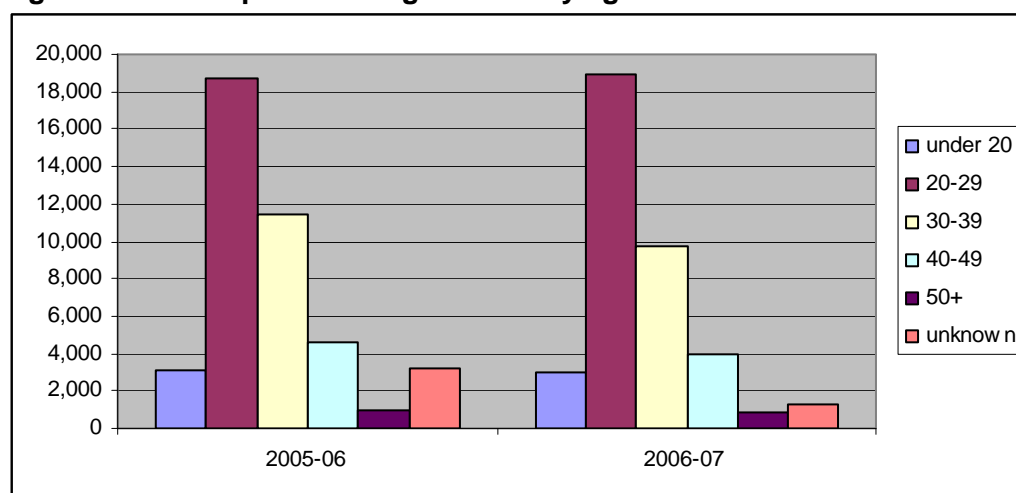
From 2002-03 to 2005-06, the proportion of women registered on Access to HE courses had gradually increased (73% to 77%), but in 2006-07 the proportion of females fell to 74 per cent. The fall in the number of learners in 2006-07 compared to the previous year, was accounted for mainly by a reduction in the number of female learners.

- **Fifty-eight per cent** of Access to HE learners in 2006-07 **were under 30.**

**Table 5b: learner profile at registration (by age)**

	2005-06 all learners (%of total)	2006-07 all learners (% of (total))	2006-07 female learners (% female learners)	2006-07 male learners (% male learners)
Under 20	3,070 (7%)	<b>3,045(8%)</b>	2,005 (7%)	1,040 (11%)
20-29	18,755 (45%)	<b>18,935 (50%)</b>	13,780 (49%)	5,155 (53%)
30-39	11,440 (27%)	9,705 (26%)	7,760 (28%)	1,940 (20%)
40-49	4,600 (11%)	3,980 (11%)	3,060 (11%)	920 (10%)
50+	940 (2%)	855 (2%)	555 (2%)	300 (3%)
Unknown	3,180 (8%)	1,295 (3%)	995 (4%)	305 (3%)
Total	41,985	37,820	28,155	9,660

**Figure F: learner profile at registration by age**



The age group with the largest number of learners in 2006-07 was the 20-29 group, and although total learner registrations fell in 2006-07, the number of learners aged between 20-29 increased from 18,755 in 2005-06 to 18,935 in 2006-07. The number of learners in all other categories fell in 2006-07. The number of unknowns decreased from 3,180 in 2005-06 to 1,295 in 2006-07. Male learners tend to be younger than female learners, with 64% of male learners being under 30, compared to 56 per cent of female learners.

- **Twenty-four per cent** of Access to HE learners in 2006-07 were from **minority ethnic groups**.

**Table 5c: learner profile at registration (by ethnicity)**

	2006-07 male learners	2006-07 female learners	2005-06 all learners (% of total)	2006-07 all learners (% of total)
Asian or Asian British: Bangladeshi	145	135	170 (0%)	280 (1%)
Asian or Asian British: Indian	125	290	405 (1%)	415 (1%)
Asian or Asian British: Pakistani	265	385	575 (1%)	650 (2%)
Asian or Asian British: any other Asian	180	255	340 (1%)	435 (1%)
Black or Black British: African	1,010	2,100	2,610 (6%)	3,110 (8%)
Black or Black British: Caribbean	350	1,235	1,405 (3%)	1,585 (4%)
Black or Black British: any other	125	425	550 (1%)	550 (1%)
Chinese	90	140	500 (1%)	230 (1%)
Mixed: White and Asian	50	105	155 (0%)	155 (0%)
Mixed: White and black African	90	205	250 (1%)	295 (1%)
Mixed: White and black Caribbean	80	380	365 (1%)	460 (1%)

Mixed: any other	85	225	350 (1%)	315 (1%)
White: British	4,970	16,910	23,910 (57%)	21,880 (58%)
White: Irish	85	215	265 (1%)	300 (1%)
White: any other	365	860	885 (2%)	1,220 (3%)
Any other	300	430	750 (2%)	730 (2%)
Not known/not provided	1,345	3,870	8,505 (20%)	5,215 (14%)
<b>Total</b>	<b>9,660</b>	<b>28,155</b>	<b>41,985</b>	<b>37,820</b>

The proportions of learners across the ethnicity categories in 2006-07 remained similar to previous years, with 62 per cent of learners being from White ethnic groups; 14 per cent from Black and Black British groups; five per cent from Asian, Asian British and Chinese groups; 5 per cent from other groups; and 14 per cent for whom the ethnic background is unknown or not recorded. However, the number of Black and Asian learners increased from 6,060 in 2005-06 to 7,025 in 2006-07, a percentage increase of 16 per cent.

**Table 5d: learner profile at registration (by disadvantage)**

	2005-06 total learners in category (% of total)	2006-07 total learners in category (% of total)
From deprived area: postcode on LSC file	9,020(23%)	9,555 (27%)
From deprived area: postcode not on LSC file	670 (2%)	315 (1%)
Other LSC w'ing participation category (funding claimed)	960 (2%)	1,100 (3%)
No funding claimed against widening participation category/no information	<b>28,475 (73%)*</b>	<b>24,040 (69%)*</b>

\*excludes learners in Wales, where data on disadvantage is not collected.

The number of learners recorded as receiving LSC uplift funding increased between 2005-06 and 2006-07. However, the data presented here is based on incomplete AVA data for 2005-06 and therefore comparisons between the two years may not be reliable.

**5e Learner profile at registration: disability and learning difficulty (see Table 5e, below)**

- **Eight per cent of Access to HE learners in 2006-07 had a disability and/or learning difficulty.**

**Table 5e: learner profile at registration (by disability/learning difficulty)**

	2005-06 total learners in category (% of total)	2006-07 total learners in category (% of total)
Disability/ies	1,005 (2%)	<b>1,250 (3%)</b>
Learning difficulty/ies	1,240 (3%)	<b>1,110 (3%)</b>
Disability and learning difficulty/ies	700 (2%)	<b>940 (2%)</b>
No disability or learning difficulty	24,280 (58%)	25,170 (67%)
No information provided	14,755 (35%)	9,340 (25%)

The percentage of Access to HE learners with disabilities and/or learning difficulties increased in 2006-07 compared to 2005-06. The number for whom no information was provided decreased significantly from the previous year, and represented 25 per cent of the total in 2006-07 compared to 35 per cent in 2005-06.

## 6 Learner completion and achievement (see tables 6a - 6d)

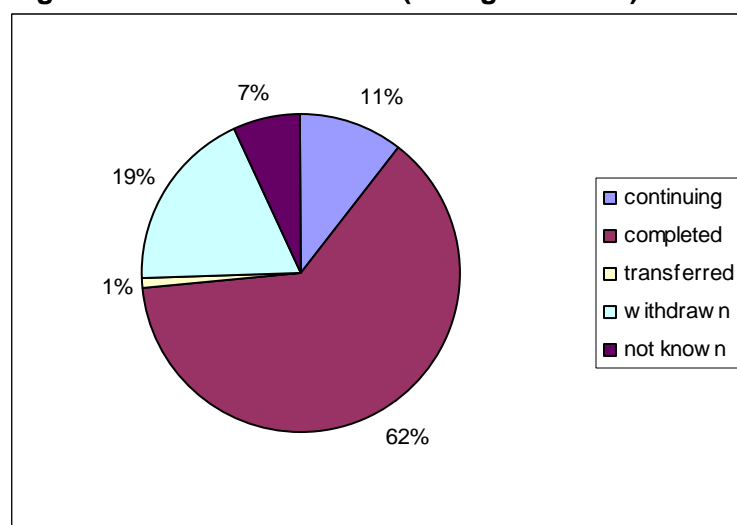
### Learner completion: all registrations (see table 6a, below)

- **Sixty-three per cent** of all Access to HE students who registered on an Access to HE course in 2006-07 **completed it in that year**.
- Fifty-six per cent of all Access to HE students in Wales who registered on an Access to HE course in 2006-07 **completed it in that year**.
- A further **11 per cent** were expected to **continue their Access to HE studies in 2006-07**.

**Table 6a: learner outcomes (all registrations)**

	Study continuing	No achievement	Partial achievement	Access to HE certificate awarded	Total learners (% of total learners)
Continuing	3,540	250	200	0	3,985 (11%)
<b>Completed course</b>	<b>0</b>	<b>1,095</b>	<b>3,250</b>	<b>19,350</b>	<b>23,695 (63%)</b>
Transferred	0	355	65	50	470 (1%)
Withdrawn	0	6,205	680	180	7,065 (19%)
Not known	295	1,450	515	345	2,600 (7%)
<b>Total</b>	<b>3,830</b>	<b>9,355</b>	<b>4,710</b>	<b>19,925</b>	<b>37,820</b>

**Figure G: learner outcomes (all registrations)**



### Learner achievement: accreditation of withdrawals

**Table 6b: withdrawals**

	2003-04	2004-05	2005-06	2006-07
Withdrawn: partial accreditation	1,000 (2%)	872 (2%)	415 (1%)	680 (2%)
Withdrawn: no accreditation	7,130 (16%)	6,700 (15%)	6,405 (15%)	6,205 (16%)
<b>Total withdrawn</b>	<b>8,130</b>	<b>7,570</b>	<b>6,820</b>	<b>6,885</b>

The number and proportion of Access to HE learners who withdrew from their course of study decreased over the period, with a reduction from 8,130 in 2003-04 to 6,885 in 2006-07, a fall of 15 per cent.

### 6c Learner achievement: award of Access to HE certificates

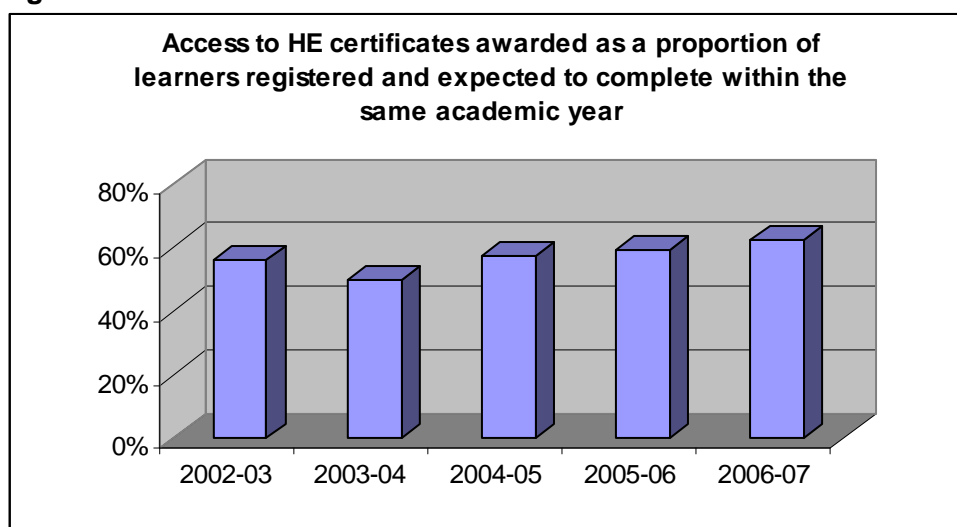
- There were **19,925 Access to HE certificates** awarded in 2006-07.
- There were 1,245 Access to HE certificates awarded to learners studying on courses in Wales: 18,680 in England.
- Of those completing the course in England and Wales, **82 per cent** were **awarded Access to HE certificates**.
- Of those registered to complete the course in England and Wales within the same academic year, **62 per cent** were awarded the **Access to HE certificate**.

**Table 6c: Access to HE certificates awarded**

	2002-03	2003-04	2004-05	2005-06	2006-07
Access to HE certificates awarded	18,395	19,605	20,690	20,920	19,925
Access to HE certificates awarded as a proportion of those registered and expected to complete within the same academic year	56%	50%	57%	59%	62%

The number of Access to HE certificates awarded fell in 2006-07, which reflected the fall in the number of registrations. Sixty-two per cent of the number who were expected to complete their Access to HE course before 1 August 2007 were awarded an Access to HE certificate within that year.

**Figure H: Access to HE certificates awarded**



## Learner registrations and awards by designated progression route (2006-07)

**Table 6d: learner registrations and awards by designated progression route**

	Learner registrations	Access to HE certificate awarded
Other general and combined studies	10,050	5,120
Access to nursing	5,880	2,665
Science combined with social studies/arts	3,050	1,510
Access to health studies	3,825	2,040
Creative arts and design	2,025	1,215
Other social studies	1,790	990
Social work	1,745	885
Combined social sciences	1,525	760
Combined science	1,270	645
Business and administrative studies	1,120	675
Teaching	1,060	580

The table above provides the subject areas with more than 1,000 students registered as learners together with the number of Access to HE certificates awarded in those subject areas. Of the 29 subject areas for which data was provided, eight subjects had fewer than 100 learners registered, 10 had between 100 and 1,000 learners registered and 11 had more than 1,000 registered learners. Twenty-one of the subject areas had more than 50 per cent certificates awarded as a proportion of total learner registrations.

## 7 Learner progression: intended destination (of completers)

**Table 7: learner progression: intended destination**

	2002-03	2003-04	2004-05	2005-06	2006-07
Progressing to HE course	12,025	14,045	14,775	12,760	11,815
Progressing to FE course	1,380	1,010	1,050	850	895
Progressing to employment	1,820	1,250	1,395	1,400	1,155
Other	1,500	1,070	850	1,185	610
unknown	18,785	23,820	12,110	13,890	14,155