

HIGHER EDUCATION STUDENTS APPLYING THROUGH UCAS WITH AN ACCESS QUALIFICATION 1996 – 2000 ENTRY

Since the inception of Access programmes in 1978, they have become well established as a recognised route into higher education for adult learners. Access programmes are specially designed for mature students and those who, for whatever reason, have been educationally disadvantaged. The growth in Access programmes has been rapid. There were only six courses in 1979, and 130 in 1984. By 2000, the total number of recognised Access programmes registered by the Quality Assurance Agency (QAA) was nearly 1,200 in England, Wales and Northern Ireland, accounting for an estimated 30,000 enrolments through Authorised Validating Agencies (AVAs) - a network of locally based consortia.

The QAA is responsible for the framework of national arrangements for the recognition of Access programmes. It licenses the AVAs to act as awarding bodies. Access programmes which the AVAs have validated and approved are registered centrally with the QAA for a 'kitemark' of national recognition. There are currently 32 AVAs in operation.

In recent years, an increasing number of discrete Access Courses are being replaced by Access 'provision', e.g. large, college-wide, modular, multi-subject schemes, which use credit-based learning, and the Accreditation of Prior Learning (APL). In these cases, the terminology 'course' is replaced by 'programme' or 'Access provision' and for such credit-based modular Access provision, the quality assurance arrangements tend to focus on the Access qualification as a 'customised award' made up from credits according to specified rules of combination (UCAS1996:1).

An Internet web-site, launched in 1998, has been developed by UCAS to promote the Database of Access programmes. The web-site can be searched by region, subject or course and includes all programmes listed in the Department for Education and Employment's (DfEE's) official Schedule 2(c) listing, which is published annually. It can be found on the UCAS web-site at <http://www.ucas.ac.uk/access>. Originally, the Database of Access Courses was developed by staff at City University in collaboration with the National Information Services Systems (NISS). From autumn 1996, UCAS assumed responsibility for the management and maintenance of the Database. University and College admissions staff may use the Database to understand the range of students' experience of subjects, study skills and forms of assessment. Information on the Database can assist staff in the formulation of an 'offer' of a place that fits students' needs and institution's course offerings.

The Database holds information about the institutions who provide Access programmes,

including contact names, a summary of the curriculum offered, methods of assessment, requirements for achieving the Access Certificate and details of progression links with higher education institutions (HEI).

INTRODUCTION

This paper provides data for applicants to higher education courses in the last five years (1996 to 2000). This five-year overview includes information about the characteristics relating to Access applicants and accepted applicants domiciled in the UK who applied for a full-time degree/DipHE or HND through UCAS. It includes information about the age and gender of those who applied and were accepted, their ethnic origin and social class, and also identifies the most popular courses onto which they enrolled.

In addition, two years of data is also included detailing MOASIC lifestyles of applicants and accepted applicants. Developed by Experian, MOSAIC is a geodemographic tool used to classify residential postcode areas into distinct neighbourhood types based on statistical information about the people who live in them. It uses a combination of census, electoral roll, housing and financial data to classify households into 12 groups (see tables 6A page 15 below).

In Scotland, a separate scheme exists for Access programmes within the Scottish Wider Access Programme (SWAP), which offers around 50 Access programmes, with almost 7,000 enrolments since its inception in 1987.

1. UCAS APPLICANTS AND ACCEPTED APPLICANTS

Although many applicants hold more than one type of qualification, UCAS applicants are categorised according to what is considered their best qualification. Table 1A shows the main qualification of home applicants and accepted applicants to UCAS member institutions for 1996 to 2000 entries. For entry to universities and colleges in 1996, Access and Foundation courses were consolidated under one heading; for 1997 and ensuing years, these courses were coded separately. It is therefore difficult to make comparisons between years.

For 1998 and 1999 entry, there was a decrease in the number of Access applicants for university and college places, but a slight increase for 2000 entry. The increase in the number of all home applicants for 2000 entry compared to the previous year was 0.1%. For Access applicants, the increase was 0.25% (17,057). This figure compares with a decrease from applicants holding Foundation certificates of 5.4% (4,994) and an increase for BTEC/SCOVTEC qualifications of 2.9% (37,250). Applicants offering GNVQ as their main qualification increased for the fifth consecutive year by 5.9% (35,708).

The decline in the number of applicants presenting Access certificates for 1996 – 1999 entry follows several years when the proportion of the total number of home applicants with such qualifications had shown a steady increase. It is possible that the change may be attributed to a number of factors: the falling birth rates in the 1960s and 1970s, the saturation of the mature student market, or to the changes in student financial support in recent years. As indicated in the UCAS Press Release of 17 December 1997:

It is important to note that some 26,000 students were admitted to universities and colleges in 1997 over and above the national target. It may therefore be inferred that there would thereby be an in-built reduction in the application cohort for entry in 1998'.

Over the five period from 1996 to 2000, the proportion of accepted home applicants holding Access certificates has declined as a percentage of the total accepted home

applicant population as can be seen in Table 1A. The table shows a steady decrease in accepted home applicants with an Access certificate, with a slight increase for 2000 entry of 0.25% (17,057).

TABLE 1A - Home Applicants and Accepted Applicants by Main Qualification

Main Qualification	1996		1997		1998		1999		2000	
	Apps	Accs	Apps	Accs	Apps	Accs	Apps	Accs	Apps	Accs
2 or more A Level passes	198035	164125	214862	183123	213876	181459	214886	183852	213718	185348
Access	26373	17569	21405	14203	18380	12208	17013	11269	17057	11402
Baccalaureate	1212	873	1254	915	1378	1007	1324	989	1017	796
BTEC/SCOTVEC	39038	25886	40431	26562	37618	25242	36197	24801	37250	26157
Deg/Partial Deg Credits	4471	2244	4782	2387	5166	2573	5677	3207	6492	3680
Foundation	-	-	6066	4475	5411	3962	5280	3851	4994	3772
GNVQ	22380	13895	29757	19334	32715	22143	33693	23396	35708	25583
None	19499	10352	26895	18669	25894	18273	26786	20524	25674	20307
Scottish Highers	20932	16150	21398	16641	20835	16421	21078	16823	20823	17106
Other	32945	17195	31477	17009	28315	14932	26757	14353	26358	14567
Grand Total	364885	268289	398327	303318	389588	298220	388691	303065	389091	308718

2. APPLICANTS AND ACCEPTED APPLICANTS: Age Range

UCAS applicants are referred to as 'mature' applicants if they are aged 21 years or over at 30 September of their year of entry. Table 2A shows the age range of Access applicants from 1996 to 2000. The largest number of applicants who present Access qualifications are aged between 25 – 39. This proportion has grown from 58.6% in 1996, to 60.0% in 2000. This is followed by the 21 - 24 age-range of whom there were 22.1% in 1996, 23.4% in 2000. This distribution is to be expected and illustrates that Access courses are succeeding in reaching their goal of recruiting mature students.

TABLE 2A - Access Applicants by Age Range

Age Range	Access 1996	%	Access 1997	%	Access 1998	%	Access 1999	%	Access 2000	%
20 and under	1564	5.9%	611	2.9%	594	3.2%	662	3.9%	527	3.1%
21 to 24	5815	22.1%	4873	22.8%	4203	22.9%	3960	23.3%	3998	23.4%
25 to 39	15459	58.6%	12960	60.5%	11171	60.8%	10118	59.4%	10241	60.0%
40 and over	3535	13.4%	2961	13.8%	2412	13.1%	2273	13.4%	2291	13.4%
Grand Total	26373	100.0%	21405	100.0%	18380	100.0%	17013	100.0%	17057	100.0%

Although there was an overall decrease in the number of home applicants for 1998 entry, there was a slight increase in the number of home applicants for 1999 and 2000 entries as seen in Table 2B. The number of those under 20 presenting Access qualifications declined for years 1996 to 1998, but the per cent rose slightly for 1999 entry as in Table 2A.

TABLE 2B - Other Applicants by Age Range

Age Range	Other 1996	%	Other 1997	%	Other 1998	%	Other 1999	%	Other 2000	%
20 and under	272634	80.5%	300315	79.7%	303135	81.7%	306147	82.4%	306504	82.4%
21 to 24	31770	9.4%	36127	9.6%	33084	8.9%	32401	8.7%	33164	8.9%

Age Range	Other 1996	%	Other 1997	%	Other 1998	%	Other 1999	%	Other 2000	%
25 to 39	28870	8.5%	33744	8.9%	29197	7.9%	27289	7.3%	26330	7.1%
40 and over	5238	1.6%	6736	1.8%	5792	1.5%	5841	1.6%	6036	1.6%
Grand Total	338512	100.0%	376922	100.0%	371208	100.0%	371678	100.0%	372034	100.0%

The age range for accepted Access applicants is very similar. In the Access population, mature applicants have a higher acceptance rate as displayed in the table below, whereas for all home applicants, under 21 year olds have a higher acceptance rate (see Table 2D).

TABLE 2C - Accepted Access Applicants by Age Range

Age Range	Access 1996	%	Access 1997	%	Access 1998	%	Access 1999	%	Access 2000	%
20 and under	994	5.7%	349	2.5%	351	2.9%	393	3.5%	330	2.9%
21 to 24	3736	21.3%	3091	21.8%	2693	22.1%	2521	22.4%	2527	22.2%
25 to 39	10387	59.1%	8722	61.4%	7540	61.8%	6791	60.3%	6943	60.9%
40 and over	2452	14.0%	2041	14.4%	1624	13.3%	1564	13.9%	1602	14.1%
Grand Total	17569	100.0%	14203	100.0%	12208	100.0%	11269	100.0%	11402	100.0%

TABLE 2D - Other Accepted Applicants by Age Range

Age Range	Other 1996	%	Other 1997	%	Other 1998	%	Other 1999	%	Other 2000	%
20 and under	208102	83.0%	237170	82.0%	239312	83.7%	245233	84.0%	250219	84.2%
21 to 24	20806	8.3%	24722	8.6%	233079	8.1%	23283	8.0%	24358	8.2%
25 to 39	18284	7.3%	22467	7.8%	19549	6.8%	18998	6.5%	18355	6.2%
40 and over	3528	1.4%	4756	1.6%	4072	1.4%	4282	1.5%	4384	1.5%
Grand Total	250720	100.0%	289115	100.0%	286012	100.0%	291796	100.0%	297316	100.0%

Table 2E displays the gender split by age range of Access applicants for 1996 to 2000. This table demonstrates clear gender differences between female and male Access applicants compared with other applicants to higher education. Female applicants comprise 60% of applicants applying with an Access qualification for all years.

The distribution of applicants holding Access certificates indicates that those in the 25 – 39 age category are the dominant group, with more women falling into this category than men. The figures for women have risen from 60.7% in 1996 to 62.7% in 2000. The figures for men during the same period, however, have varied from 55.5% in 1996 to 54.9% in 2000. It may be hypothesised that women use Access courses to return to education when domestic or child care commitments have been fulfilled and that men find it a suitable qualification when they suffer job insecurities or redundancy at various points in their lives.

TABLES 2E - Access Applicants by Age and Gender

Male

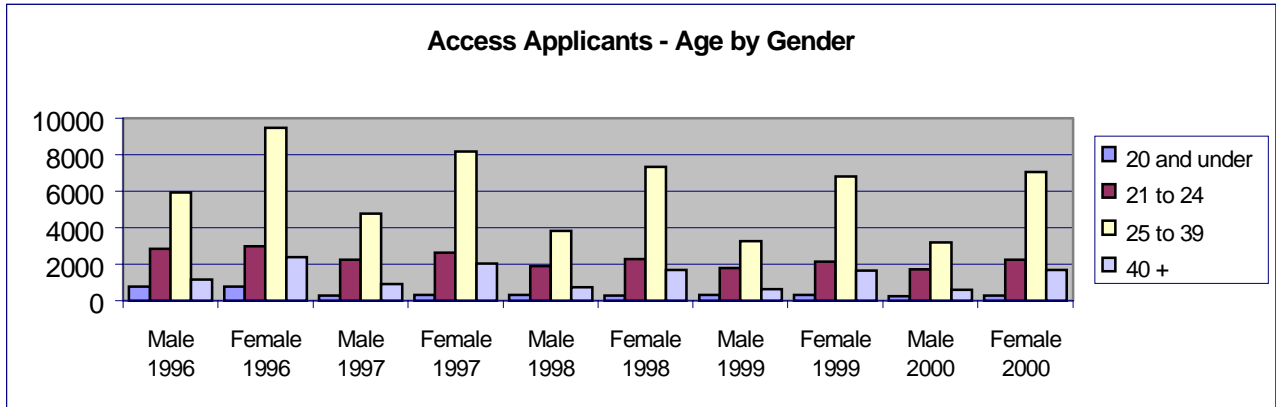
Age Range	Male 1996	%	Male 1997	%	Male 1998	%	Male 1999	%	Male 2000	%
20 and under	784	7.3%	279	3.4%	310	4.6%	343	5.7%	251	4.3%
21 to 24	2836	26.4%	2248	27.3%	1926	28.3%	1803	29.7%	1741	30.1%
25 to 39	5959	55.5%	4781	58.1%	3825	56.3%	3288	54.2%	3181	54.9%
40 +	1154	10.8%	920	11.2%	737	10.8%	635	10.5%	620	10.7%
Total	10733	100.0%	8228	100.0%	6798	100.0%	6069	100.0%	5793	100.0%

Female

--	--	--	--	--	--	--	--	--	--	--

Age Range	Female 1996	%	Female 1997	%	Female 1998	%	Female 1999	%	Female 2000	%
20 and under	780	5.0%	332	2.5%	284	2.5%	319	2.9%	276	2.5%
21 to 24	2979	19.0%	2625	19.9%	2277	19.7%	2157	19.7%	2257	20.0%
25 to 39	9500	60.7%	8179	62.1%	7346	63.4%	6830	62.4%	7060	62.7%
40 +	2381	15.2%	2041	15.5%	1675	14.5%	1638	15.0%	1671	14.8%
Total	15640	100.0%	13177	100.0%	11582	100.0%	10944	100.0%	11264	100.0%

Bar Chart of Tables 2E



TABLES 2F - Other Applicants by Age and Gender

Male

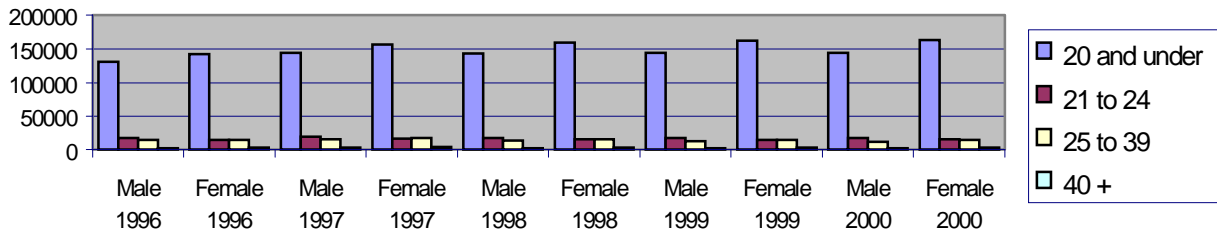
Age Range	Male 1996	%	Male 1997	%	Male 1998	%	Male 1999	%	Male 2000	%
20 and under	130867	79.4%	143457	78.9%	143306	80.8%	144245	81.8%	144118	82.0%
21 to 24	17191	10.4%	19490	10.7%	17820	10.1%	17404	9.9%	17558	10.0%
25 to 39	14335	8.7%	16157	8.9%	13814	7.8%	12425	7.0%	11732	6.7%
40 +	2353	1.4%	2708	1.5%	2331	1.03%	2262	1.3%	2295	1.3%
Total	164746	100.0%	181812	100.0%	177271	100.0%	176336	100.0%	175703	100.0%

Female

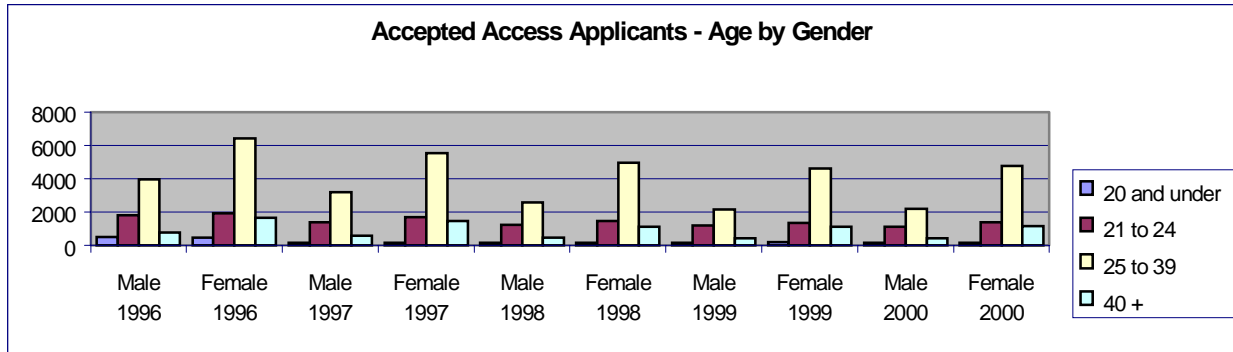
Age Range	Female 1996	%	Female 1997	%	Female 1998	%	Female 1999	%	Female 2000	%
20 and under	141767	81.6%	156858	80.4%	159829	82.4%	161902	82.9%	162386	82.7%
21 to 24	14579	8.4%	16637	8.5%	15264	7.9%	14997	7.7%	15606	7.9%
25 to 39	14535	8.4%	17587	9.0%	15383	7.9%	14864	7.6%	14598	7.4%
40 +	2885	1.7%	4028	2.1%	3461	1.8%	3579	1.8%	3741	1.9%
Total	173766	100.0%	195110	100.0%	193937	100.0%	195342	100.0%	196331	100.0%

Bar Chart of Tables 2F

Other Applicants - Age by Gender



TABLES 2G - Accepted Access Applicants - Age by Gender



Male

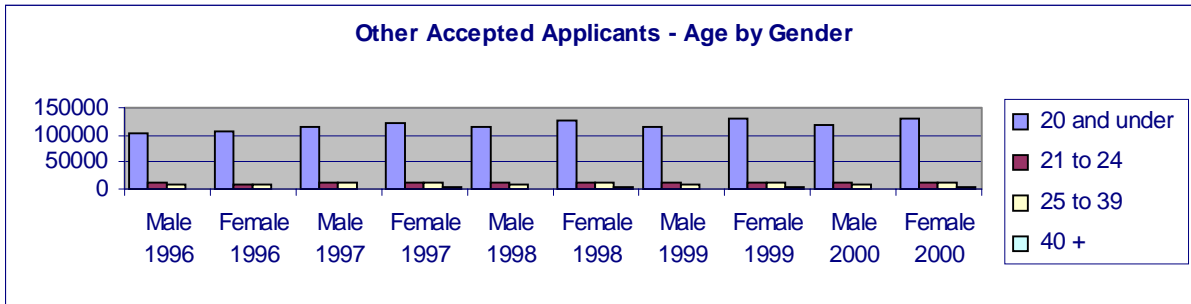
Age Range	Male 1996	%	Male 1997	%	Male 1998	%	Male 1999	%	Male 2000	%
20 and under	511	7.2%	164	3.1%	177	4.0%	193	4.8%	158	4.1%
21 to 24	1814	25.6%	1385	26.0%	1234	27.7%	1185	29.9%	1115	28.6%
25 to 39	3964	56.0%	3190	59.9%	2561	57.5%	2168	54.6%	2182	56.0%
40 and over	790	11.2%	585	11.0%	482	10.8%	425	10.7%	440	11.3%
Grand Total	7079	100.0%	5324	100.0%	4454	100.0%	3971	100.0%	3895	100.0%

Female

Age Range	Female 1996	%	Female 1997	%	Female 1998	%	Female 1999	%	Female 2000	%
20 and under	483	4.6%	185	2.1%	174	2.2%	200	2.7%	172	2.3%
21 to 24	1922	18.3%	1706	19.2%	1459	18.8%	1336	18.3%	1412	18.8%
25 to 39	6423	61.2%	5532	62.3%	4979	64.2%	4623	63.4%	4761	63.4%
40 and over	1662	15.8%	1456	16.4%	1142	14.7%	1139	15.6%	1162	15.5%
Grand Total	10490	100.0%	8879	100.0%	7754	100.0%	7298	100.0%	7507	100.0%

TABLES 2H - Other Accepted Applicants - Age by Gender

Male



Age Range	Male 1996	%	Male 1997	%	Male 1998	%	Male 1999	%	Male 2000	%
20 and under	101627	81.8%	114524	81.1%	114314	82.6%	116313	83.3%	118046	83.6%
21 to 24	11672	9.4%	13768	9.8%	12836	9.3%	12802	9.2%	13203	9.3%
25 to 39	9281	7.5%	10935	7.7%	9568	6.9%	8877	6.4%	8377	5.9%
40 and over	1608	1.3%	1915	1.4%	1626	1.2%	1661	1.2%	1656	1.2%
Grand Total	124188	100.0%	141142	100.0%	138344	100.0%	139653	100.0%	141282	100.0%

Female

Age Range	Female 1996	%	Female 1997	%	Female 1998	%	Female 1999	%	Female 2000	%
20 and under	106475	84.1%	122646	82.9%	124998	84.6%	128920	84.7%	132173	84.7%
21 to 24	9134	7.2%	10954	7.4%	10243	6.9%	10481	6.9%	11155	7.1%
25 to 39	9003	7.1%	11532	7.8%	9981	6.8%	10121	6.7%	9978	6.4%
40 and over	1920	1.5%	2841	1.9%	2446	1.7%	2621	1.7%	2728	1.7%
Grand Total	126532	100.0%	147973	100.0%	147668	100.0%	152143	100.0%	156034	100.0%

Bar Chart of Tables 2H

3. APPLICANTS AND ACCEPTED APPLICANTS: *Ethnic Origin*

Ethnic origin data is voluntarily provided by applicants on the UCAS application form and is withheld from institutions until after the selection process. For 1996 entry, the ethnic origin was known for 94.5% of UK applicants, and for 2000 entry 92.2%. The ratio of ethnic origin data may be distorted due to the fact that many applicants state 'Prefer not to Say' on their application form. The number of home applicants whose ethnic origin is not known has increased over the five years from 19,895 in 1996 to 30,361 in 2000.

For 1996 entry, 17.4% of applicants holding an Access qualification were from an ethnic minority; 5.5% were Asian and 11.9% were Black. This figure compares with 12.2% of applicants from ethnic minorities who did not offer Access certificates, where 9.1% were Asian and 3.1% were Black. These results show that black ethnic minority groups represent a higher proportion of Access home applicants than they do of other home applicants. The acceptance figures show a similar picture. For the same year, a total of 15.3% of Access applicants from an ethnic minority were accepted (5% Asian and 10.3% Black), compared to 11.4% of accepted applicants holding another qualification (8.8% Asian and 2.6% Black).

The figures for 1997 - 2000 show a similar picture. In 1997, 18.9% of Access applicants

were from an ethnic minority (5.6% Asian and 13.2% Black) and for 1998 the figures were 19% (5.6% Asian and 13.4% Black). For 1999 entry there was a decrease in the number of Access Applicants for ethnic minority of 13% (9.8% Asian and 3.2% Black) with a similar picture for 2000 entry, 13.7% (9.9% Asian and 3.8% Black).

Acceptances for applicants with an Access qualification for 1997 were 16.5% (5.0% Asian and 11.5% Black) and for 1998 17.1% (5.2% Asian and 11.9% Black). For 1999 entry 17% Access Applicants were accepted (5.6% Asian and 11.4% Black) and for 2000 entry 16.9% were accepted (5.1% Asian and 11.8% Black).

TABLE 3A - Access Applicants by Ethnic Origin

Ethnic Origin	Male 1996	%	Female 1996	%	Male 1997	%	Female 1997	%	Male 1998	%	Female 1998	%	Male 1999	%	Female 1999	%	Male 2000	%	Female 2000	%
Asian Bangladeshi	90	0.8%	43	0.3%	62	0.8%	55	0.4%	54	0.8%	38	0.3%	55	0.9%	53	0.5%	48	0.8%	45	0.4%
Asian Chinese	56	0.5%	63	0.4%	37	0.4%	51	0.4%	25	0.4%	40	0.3%	27	0.4%	48	0.4%	41	0.7%	50	0.4%
Asian Indian	197	1.8%	229	1.5%	158	1.9%	190	1.4%	149	2.2%	166	1.4%	149	2.5%	159	1.5%	112	1.9%	1133	1.2%
Asian Other Asian	167	1.6%	167	1.1%	135	1.6%	142	1.1%	123	1.8%	113	1.0%	114	1.9%	127	1.2%	112	1.9%	124	1.1%
Asian Pakistani	248	2.3%	197	1.3%	192	2.3%	183	1.4%	161	2.4%	169	1.5%	169	2.8%	157	1.4%	170	2.9%	146	1.3%
Black African	746	7.0%	683	4.4%	681	8.3%	664	5.0%	512	7.5%	629	5.4%	487	8%	546	5.0%	502	8.7%	623	5.5%
Black Caribbean	372	3.5%	874	5.6%	314	3.8%	755	5.7%	252	3.7%	695	6.0%	217	3.6%	590	5.4%	186	3.2%	615	5.5%
Black Other	151	1.4%	313	2.0%	144	1.8%	282	2.1%	110	1.6%	268	2.3%	120	2.0%	259	2.4%	104	1.8%	259	2.3%
White	6794	63.3%	10657	68.1%	5213	63.4%	8866	67.3%	4035	59.4%	7261	62.7%	3562	58.7%	7153	65.4%	3365	58.1%	7377	65.5%
X Other	237	2.2%	345	2.2%	238	2.9%	290	2.2%	178	2.6%	292	2.5%	184	3.0%	285	2.6%	171	3.0%	305	2.7%
X Unknown	1675	15.6%	2069	13.2%	1054	12.8%	1699	12.9%	1199	17.6%	1911	16.5%	985	16.2%	1567	14.3%	982	17.0%	1587	14.1%
Grand Total	10733	100.0%	15640	100.0%	8228	100.0%	13177	100.0%	6798	100.0%	11582	100.0%	6069	100.0%	10944	100.0%	5793	100.0%	11264	100.0%

TABLE 3B - Other Applicants by Ethnic Origin

Ethnic Origin	Male 1996	%	Female 1996	%	Male 1997	%	Female 1997	%	Male 1998	%	Female 1998	%	Male 1999	%	Female 1999	%	Male 2000	%	Female 2000	%
Asian Bangladeshi	1259	0.8%	890	0.5%	1359	0.7%	985	0.5%	1353	0.8%	1129	0.6%	1480	0.8%	1266	0.6%	1586	0.9%	1334	0.7%
Asian Chinese	1518	0.9%	1473	0.8%	1693	0.9%	1696	0.9%	1707	1.0%	1581	0.8%	1787	1.0%	1708	0.9%	1783	1.0%	1720	0.9%
Asian Indian	6988	4.2%	6657	3.8%	7684	4.2%	7285	3.7%	7834	4.4%	7761	4.0%	8294	4.7%	7988	4.1%	8452	4.8%	8327	4.2%
Asian Other Asian	2109	1.3%	1790	1.0%	2252	1.2%	2052	1.1%	2241	1.3%	2076	1.1%	2200	1.2%	2165	1.1%	2203	1.3%	2260	1.2%
Asian Pakistani	4609	2.8%	3440	2.0%	4908	2.7%	3841	2.0%	5096	2.9%	4056	2.1%	5354	3.0%	4264	2.2%	5520	3.1%	4387	2.2%
Black African	2999	1.8%	2712	1.6%	3295	1.8%	3047	1.6%	3017	1.7%	2903	1.5%	3063	1.7%	2995	1.5%	3174	1.8%	3218	1.6%
Black Caribbean	1313	0.8%	1961	1.1%	1507	0.8%	2256	1.2%	1403	0.8%	2197	1.1%	1437	0.8%	2296	1.2%	1368	0.8%	2201	1.1%
Black Other	596	0.4%	881	0.5%	737	0.4%	1133	0.6%	804	0.5%	1249	0.6%	852	0.5%	1286	0.7%	944	0.5%	1417	0.7%
White	132076	80.2%	144016	82.9%	142835	78.6%	158223	81.1%	135359	76.4%	154272	79.5%	134275	76.1%	154630	79.2%	132889	75.6%	154764	78.8%
X Other	2288	1.4%	2786	1.6%	2637	1.5%	3202	1.6%	2581	1.5%	3295	1.7%	2722	1.5%	3558	1.8%	2946	1.7%	3749	1.9%
X Unknown	8991	5.5%	7160	4.1%	12905	7.1%	11390	5.8%	15876	9.0%	13418	6.9%	14872	8.4%	13186	6.8%	14838	8.4%	12954	6.6%
Grand Total	164746	100.0%	173766	100.0%	181812	100.0%	195110	100.0%	177271	100.0%	193937	100.0%	176336	100.0%	195342	100.0%	175703	100.0%	196331	100.0%

TABLE 3C - Accepted Access Applicants by Ethnic Origin

Ethnic Origin	Male 1996	%	Female 1996	%	Male 1997	%	Female 1997	%	Male 1998	%	Female 1998	%	Male 1999	%	Female 1999	%	Male 2000	%	Female 2000	%
Asian Bangladeshi	48	0.7%	25	0.2%	43	0.8%	31	0.3%	30	0.7%	23	0.3%	33	0.8%	31	0.4%	36	0.9%	28	0.4%
Asian Chinese	34	0.5%	47	0.4%	17	0.3%	37	0.4%	12	0.3%	28	0.4%	18	0.5%	29	0.4%	31	0.8%	32	0.4%
Asian Indian	124	1.8%	129	1.2%	97	1.8%	103	1.2%	89	2.0%	106	1.4%	73	1.8%	111	1.5%	65	1.7%	81	1.1%
Asian Other Asian	101	1.4%	102	1.0%	83	1.6%	93	1.0%	72	1.6%	72	0.9%	71	1.8%	76	1.0%	71	1.8%	68	0.9%
Asian Pakistani	134	1.9%	119	1.1%	104	2.0%	108	1.2%	100	2.2%	101	1.3%	98	2.5%	96	1.3%	88	2.3%	78	1.0%
Black African	429	6.1%	402	3.8%	404	7.6%	356	4.0%	286	6.4%	346	4.5%	294	7.4%	310	4.2%	323	8.3%	352	4.7%
Black Caribbean	211	3.0%	492	4.7%	183	3.4%	455	5.1%	146	3.3%	433	5.6%	115	2.9%	351	4.8%	100	2.6%	358	4.8%
Black Other	91	1.3%	198	1.9%	72	1.4%	163	1.8%	76	1.7%	168	2.2%	72	1.8%	141	1.9%	64	1.6%	153	2.0%
White	4575	64.6%	7346	70.0%	3568	67.0%	6280	70.7%	2824	63.4%	5087	65.6%	2480	62.5%	4997	68.5%	2426	62.3%	5186	69.1%
X Other	139	2.0%	215	2.0%	135	2.5%	186	2.1%	114	2.6%	197	2.5%	106	2.7%	188	2.6%	110	2.8%	204	2.7%
X Unknown	1193	16.9%	1415	13.5%	618	11.6%	1067	12.0%	705	15.8%	1193	15.4%	611	15.4%	968	13.3%	581	14.9%	967	12.9%
Grand Total	7079	100.0%	10490	100.0%	5324	100.0%	8879	100.0%	4454	100.0%	7754	100.0%	3971	100.0%	7298	100.0%	3895	100.0%	7507	100.0%

TABLE 3D - Other Accepted Applicants by Ethnic Origin

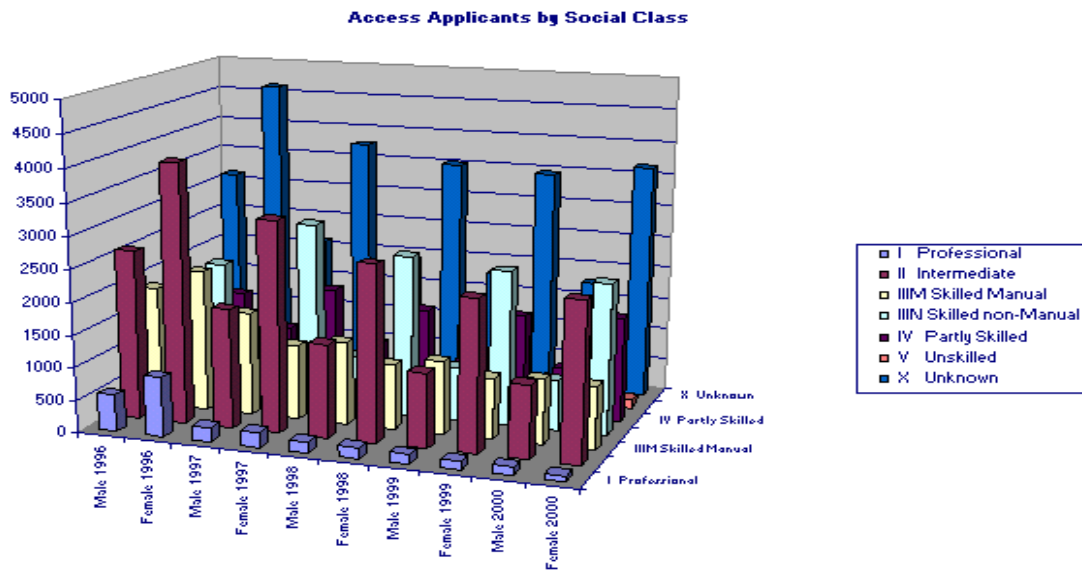
Ethnic Origin	Male 1996	%	Female 1996	%	Male 1997	%	Female 1997	%	Male 1998	%	Female 1998	%	Male 1999	%	Female 1999	%	Male 2000	%	Female 2000	%
Asian Bangladeshi	854	0.7%	611	0.5%	971	0.7%	704	0.5%	978	0.7%	777	0.5%	1069	0.8%	916	0.6%	1208	0.9%	1018	0.7%
Asian Chinese	1190	1.0%	1148	0.9%	1353	1.0%	1325	0.9%	1374	1.0%	1279	0.9%	1459	1.0%	1370	0.9%	1476	1.0%	1460	0.9%
Asian Indian	5120	4.1%	4894	3.9%	5903	4.2%	5557	3.8%	5989	4.3%	5916	4.0%	6467	4.6%	6316	4.2%	6762	4.8%	6761	4.3%
Asian Other Asian	1480	1.2%	1221	1.0%	1669	1.2%	1498	1.0%	1644	1.2%	1505	1.0%	1637	1.2%	1615	1.1%	1759	1.2%	1801	1.2%
Asian Pakistani	3114	2.5%	2349	1.9%	3488	2.5%	2652	1.8%	3631	2.6%	2766	1.9%	3803	2.7%	3075	2.0%	4056	2.9%	3240	2.1%
Black African	1869	1.5%	1614	1.3%	2126	1.5%	1901	1.3%	2012	1.5%	1860	1.3%	2093	1.5%	2023	1.3%	2166	1.5%	2252	1.4%
Black Caribbean	838	0.7%	1219	1.0%	996	0.7%	1548	1.0%	913	0.7%	1456	1.0%	975	0.7%	1564	1.0%	991	0.7%	1576	1.0%
Black Other	384	0.3%	517	0.4%	505	0.4%	786	0.5%	549	0.4%	849	0.6%	601	0.4%	935	0.6%	668	0.5%	1037	0.7%
White	101321	81.6%	106189	83.9%	112461	79.7%	121279	82.0%	107545	77.7%	119172	80.7%	107977	77.3%	121752	80.0%	108402	76.7%	124112	79.5%
X Other	1601	1.3%	1937	1.5%	1934	1.4%	2374	1.6%	1875	1.4%	2424	1.6%	2044	1.5%	2684	1.8%	2320	1.6%	2967	1.9%
X Unknown	6417	5.2%	4833	3.8%	9736	6.9%	8349	5.6%	11834	8.6%	9664	6.5%	11528	8.3%	9893	6.5%	11474	8.1%	9810	6.3%
Grand Total	124188	100.0%	126532	100.0%	141142	100.0%	147973	100.0%	138344	100.0%	147668	100.0%	139653	100.0%	152143	100.0%	141282	100.0%	156034	100.0%

4. APPLICANTS AND ACCEPTED APPLICANTS: *Social Class*

The social class of the UCAS applicant is derived from a request on the application form to enter the occupation of the parent, step-parent or guardian who has the highest income in the household. If the applicant is aged 21 or over, the occupation of the person contributing the highest income is requested. Social class is coded using the Standard Occupational Classification of the ONS (Office for National Statistics). A significant proportion of Access applicants do not specify their social class. In 1998, there were 29.5% compared with 12.3% of all UCAS applicants, and 27.65% of accepted applicants with Access qualifications compared with 11.5% of all other accepted applicants.

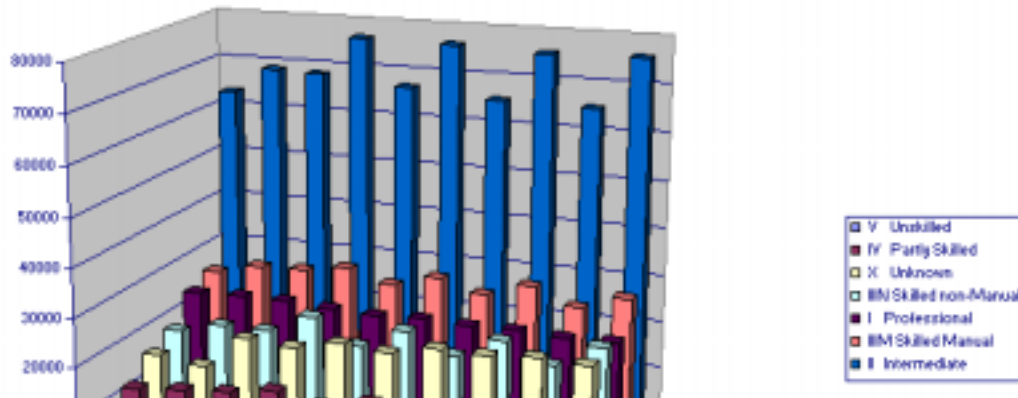
For 2000 entry the figures are similar with 31.7% of Access Applicants not specifying their social class compared with 13.1% of all UCAS applicants, and 30.7% of Accepted Access applicants compared with 12.4% of all other applicants. Lack of this information means that it is difficult for the proposition that Access provision targets those from lower social classes to be tested.

CHART 4A - Social Class by Gender

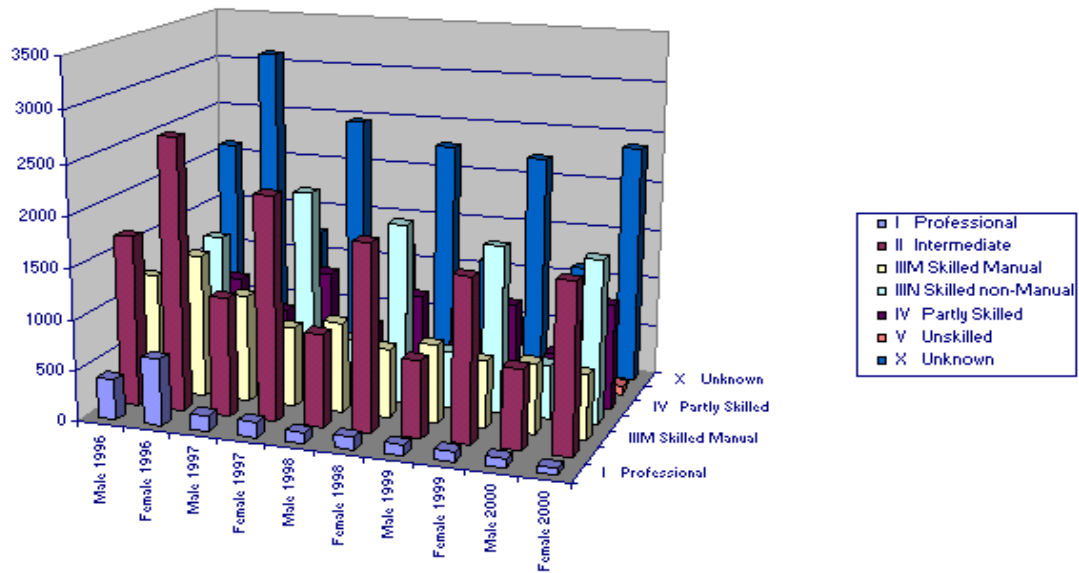


TABLES 4A - Social Class by Gender

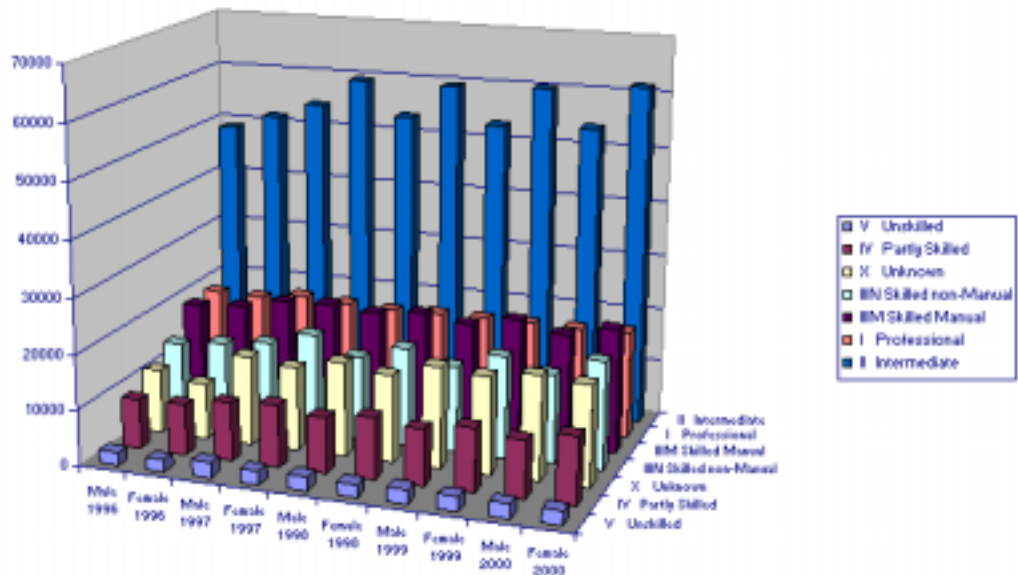
Other Applicants by Social Class



Access Accepted Applicants by Social Class



Other Accepted Applicants



5. ACCESS APPLICANTS AND ACCEPTED APPLICANTS: *Subject Groups*

Table 5A illustrates the distribution of applicants holding Access qualifications to the various subject groups that are offered by UCAS member institutions from 1996 to 2000. The table uses the Standard Classification of Academic Subjects (SCAS) employed by UCAS for classifying the 50,000 courses offered by its member institutions.

The number of course subjects offered through UCAS increases each year, with Social studies, Business and administration and Languages and related disciplines offering the greatest number of courses. For the five-year period under consideration, Social Studies remains the most popular subject for applicants, although the numbers applying and being accepted to this area declines each year. The second two most popular subjects are Education and Subjects allied to medicine. By contrast, the most popular subject group for all UCAS home applicants during this period is Business and administration, closely followed by Mathematical sciences and informatics, and areas of the Creative arts.

TABLE 5A – Access Applicants and Accepted Applicants by Subject Group

Subject Group	1996 Apps	1996 Accs	1997 Apps	1997 Accs	1998 Apps	1998 Accs	1998 Apps	1999 Accs	2000 Apps	2000 Accs
A Medicine/Dentistry	90	17	60	15	54	8	42	12	50	18
B Subjects allied to medicine	2286	1136	2341	1212	2101	1126	2211	1221	2885	1678
C Biological sciences	1754	1209	1446	956	1096	728	963	649	915	682
D Agriculture and related subjects	82	98	73	72	57	46	57	48	55	51
F Physical sciences	512	520	454	384	329	305	270	238	246	228
G Mathematical sciences and informat	1157	943	1114	817	1265	900	1412	1010	1453	1034
H/J Engineering and technology	521	522	335	279	268	219	233	182	239	204
K Architecture, building and planning	168	212	101	117	114	94	68	70	66	77
L/M Social studies	5045	3488	4196	3012	3709	2552	3251	2231	3143	2186
N Business and administrative studies	1313	979	1181	727	965	602	891	561	781	500
P Mass communications and docs	459	325	370	282	259	214	231	183	247	196
Q/R/T Languages and related disciplin	975	868	898	773	713	620	612	514	571	527
V Humanities	1027	962	793	722	677	608	571	491	540	474
W Creative arts	1408	621	1340	799	1287	723	1188	749	1164	775
X Education	2810	1823	1943	1186	1612	1079	1627	1122	1512	1075
Y Combined arts	628	731	529	601	416	507	380	429	345	375
Y Combined sciences	152	280	133	224	100	188	79	148	91	150
Y Combined social studies	71	156	47	124	45	112	62	113	53	112
Y Science combined/social studies/ arts	352	519	372	485	285	412	298	428	289	405
Y Social studies combined with arts	466	551	441	460	399	409	273	309	278	291
z No preferred subject group	4060	0	2509	0	2018	0	1871	0	1830	0
Z Other general and combined studies	1037	1609	729	956	611	756	423	561	304	364
Grand Total	26373	17569	21405	14203	18380	12208	17013	11269	17057	11402

TABLE 5B – Other Applicants and Accepted Applicants by Subject Group

Subject Group	1996 Apps	1996 Accs	1997 Apps	1997 Accs	1998 Apps	1998 Accs	1999 Apps	1999 Accs	2000 Apps	2000 Accs
A Medicine/Dentistry	11630	5325	11388	5341	10960	5448	10033	5664	9509	6022
B Subjects allied to medicine	19142	11630	27347	16952	28169	18045	29185	19374	29530	20429
C Biological sciences	18686	14525	20466	16384	19229	15166	18754	15371	17622	15060
D Agriculture and related subjects	4114	3491	4456	3895	4402	3779	4381	3697	4403	3610
F Physical sciences	13692	13798	14230	14755	13797	13970	12859	13324	12097	12355
G Mathematical sciences and inform	19092	19575	21389	21766	23859	23856	27602	26426	30172	28296

H/J Engineering and technology	18721	18442	17725	18791	17209	18041	16927	17568	16317	16953
K Architecture, building and planning	5628	5415	5429	5700	5278	5383	4941	5256	4954	5257
L/M Social studies	35984	29865	37152	33184	36589	32202	36947	33146	36666	33847
N Business and administrative studies	42121	32317	46051	36315	45654	36307	44378	36081	42186	35118
P Mass communications and docs	10062	6262	9852	7380	9437	7381	9314	7819	9705	8528
Q/R/T Languages and related disciplin	18955	16041	20041	17066	18838	16207	17663	15552	16774	15504
V Humanities	10655	9493	10892	9923	10360	9368	10301	9484	10299	9688
W Creative arts	17839	9059	38889	26304	40319	25860	40289	27839	41857	30537
X Education	32672	18984	19958	11726	17685	12959	16120	11912	15985	12302
Y Combined arts	5926	6390	5975	7326	5437	7043	5327	6929	5366	7283
Y Combined sciences	1916	5227	2284	6143	2183	6008	2067	5727	2199	6428
Y Combined social studies	1228	2478	1418	3031	1429	3045	1335	3035	1345	3146
Y Science combined/social studies/ arts	4015	7397	5628	10226	5464	10673	5698	11591	6659	12631
Y Social studies combined with arts	5876	7172	6363	8174	6214	8236	6476	8986	6673	9255
z No preferred subject group	37104	0	46589	0	46108	0	48733	0	49959	0
Z Other general and combined studies	3454	7834	3400	8733	2588	7035	2348	7015	1757	5067
Grand Total	338512	250720	376922	289115	371208	286012	371678	291796	372034	297316

The popularity of certain subject groups differs between the age groups and gender. Table 5D indicates that male Access students accepted through UCAS are most likely to study engineering and technology and women are twice as likely to select an area in the Education group and Subjects allied to medicine.

It would be reasonable to assume that women with Access certificates, of whom the majority are aged between 25 to 39 (Table 2A), are likely to have considerable experience caring and educating their children before returning to formal education. We may speculate that their application to the education and medically related areas utilises their prior learning in the domestic sphere as a foundation from which to progress into associated fields in the higher education curriculum.

Male Access students, on the other hand, are more likely to apply to programmes of study in the information technology area and to engineering and technology courses. Less is known of this population and more work is required to ascertain how Access courses are meeting the needs of this group of applicants.

TABLE 5C – Access Applicants by Gender & Subject Groups

Subject Group	1996 Male	1996 Female	1997 Male	1997 Female	1998 Male	1998 Female	1999 Male	1999 Female	2000 Male	2000 Female
A Medicine/Dentistry	54	36	30	30	27	27	22	20	19	31
B Subjects allied to medicine	554	1732	656	1685	522	1579	481	1730	527	2358
C Biological sciences	679	1075	502	944	341	755	289	674	268	647
D Agriculture and related subjects	47	35	31	42	24	33	19	38	16	39
F Physical sciences	323	189	275	179	191	138	161	109	136	110
G Mathematical sciences and informatics	820	337	798	316	864	401	963	449	1027	426
H/J Engineering and technology	454	67	297	38	237	31	191	42	209	30
K Architecture, building and planning	123	45	71	30	77	37	41	27	42	24
L/M Social studies	1737	3308	1369	2827	1137	2572	943	2308	810	2333
N Business and administrative studies	673	640	615	566	461	504	453	438	387	394
P Mass communications and documentation	224	235	177	193	125	134	94	137	111	136
Q/R/T Languages and related disciplines	327	648	291	607	223	490	191	421	176	395
V Humanities	485	542	378	415	343	334	260	311	251	289
W Creative arts	727	681	650	690	611	676	541	647	540	624
X Education	798	2012	395	1548	273	1339	260	1367	231	1281
Y Combined arts	229	399	183	346	138	278	109	271	114	231

Y Combined sciences	80	72	69	64	45	55	34	45	39	52
Y Combined social studies	26	45	22	25	21	24	20	42	15	38
Y Science combined with social studies/arts	147	205	154	218	100	185	111	187	107	182
Y Social studies combined with arts	184	282	183	258	169	230	107	166	107	171
z No preferred subject group	1710	2350	856	1653	687	1331	661	1210	599	1231
Z Other general and combined studies	332	705	226	503	182	429	118	305	62	242
Grand Total	10733	15640	8228	13177	6798	11582	6069	10944	5793	11264

TABLE 5D – Other Applicants by Gender & Subject Groups

Subject Group	1996 Male	1996 Female	1997 Male	1997 Female	1998 Male	1998 Female	1999 Male	1999 Female	2000 Male	2000 Female
A Medicine/Dentistry	5825	5805	5614	5774	5307	5653	4631	5402	4238	5271
B Subjects allied to medicine	4571	14571	9534	17813	9876	18293	10215	18970	10189	19341
C Biological sciences	6871	11815	7340	13126	6709	12520	6269	12485	5601	12021
D Agriculture and related subjects	1882	2232	1890	2566	1818	2584	1589	2792	1517	2886
F Physical sciences	9100	4592	9596	4634	9111	4686	8186	4673	7507	4590
G Mathematical sciences and informatics	15507	3585	17291	4098	19260	4599	22156	5446	24168	6004
H/J Engineering and technology	16745	1976	15711	2014	15178	2031	14911	2016	14337	1980
K Architecture, building and planning	4676	952	4420	1009	4179	1099	3877	1064	3806	1148
L/M Social studies	14828	21156	15135	22017	14515	22074	14581	22366	14268	22398
N Business and administrative studies	21310	20811	23715	22336	22792	22862	21602	22776	21053	21133
P Mass communications and documentation	3774	6288	3543	6309	3147	6290	3156	6158	3124	6581
Q/R/T Languages and related disciplines	5545	13410	5946	14095	5328	13510	4978	12685	4796	11978
V Humanities	5209	5446	5278	5614	4955	5405	4902	5399	4844	5455
W Creative arts	8118	9721	18098	20791	18097	22222	17739	22550	18305	23552
X Education	12344	20328	4022	15936	3326	14359	2954	13166	2828	13157
Y Combined arts	1833	4093	1824	4151	1567	3870	1519	3808	1649	3717
Y Combined sciences	1186	730	1367	917	1313	870	1193	874	1223	976
Y Combined social studies	625	603	731	687	680	749	649	686	645	700
Y Science combined with social studies/ arts	1880	2135	2930	2698	2905	2559	3158	2540	3473	3186
Y Social studies combined with arts	2346	3530	2521	3842	2284	3930	2410	4066	2298	4375
z No preferred subject group	19423	17681	24206	22383	24155	21953	24920	23813	25296	24663
Z Other general and combined studies	1148	2306	1100	2300	769	1819	741	1607	538	1219
Grand Total	164746	173766	181812	195110	177271	193937	176336	195342	175703	196331

TABLE 5E – Accepted Access Applicants by Gender & Subject Groups

Subject Group	1996 Male	1996 Female	1997 Male	1997 Female	1998 Male	1998 Female	1999 Male	1999 Male	1999 Female	1999 Female
A Medicine/Dentistry	9	8	9	6	2	6	8	8	4	4
B Subjects allied to medicine	270	866	331	881	293	833	249	249	972	972
C Biological sciences	444	765	334	622	206	522	191	191	458	458
D Agriculture and related subjects	48	50	33	39	21	25	18	18	30	30
F Physical sciences	331	189	214	170	166	139	133	133	105	105
G Mathematical sciences and informatics	655	288	554	263	613	287	663	663	347	347
H/J Engineering and technology	454	68	224	55	194	25	151	151	31	31
K Architecture, building and planning	154	58	66	51	57	37	41	41	29	29
L/M Social studies	1161	2327	925	2087	736	1816	631	631	1600	1600
N Business and administrative studies	472	507	357	370	276	326	272	272	289	289
P Mass communications and documentation	142	183	127	155	104	110	75	75	108	108

Q/R/T Languages and related disciplines	282	586	239	534	174	446	152	152	362	362
V Humanities	407	555	321	401	297	311	202	202	289	289
W Creative arts	308	313	350	449	311	412	325	325	424	424
X Education	488	1335	212	974	153	926	181	181	941	941
Y Combined arts	245	486	182	419	163	344	139	139	290	290
Y Combined sciences	144	136	89	135	88	100	66	66	82	82
Y Combined social studies	56	100	53	71	42	70	36	36	77	77
Y Science combined with social studies or arts	217	302	187	298	180	232	160	160	268	268
Y Social studies combined with arts	221	330	171	289	158	251	118	118	191	191
Z Other general and combined studies	571	1038	346	610	220	536	160	160	401	401
Grand Total	7079	10490	5324	8879	4454	7754	3971	3971	7298	7298

TABLE 5F – Other Accepted Applicants by Gender & Subject Groups

Subject Group	1996	1996	1997	1997	1998	1998	1999	1999	2000	2000
	Male	Female	Male	Female	Male	Female	Male	Female	Male	Female
A Medicine/Dentistry	2466	2859	2468	2873	2471	2977	2461	3203	2566	3456
B Subjects allied to medicine	3010	8620	5761	11191	6222	11823	6595	12779	7059	13370
C Biological sciences	5505	9020	5990	10394	5420	9746	5245	10126	4794	10266
D Agriculture and related subjects	1700	1791	1787	2108	1694	2085	1515	2182	1425	2185
F Physical sciences	8907	4891	9626	5129	8938	5032	8326	4998	7513	4842
G Mathematical sciences and informatics	15371	4204	17131	4635	18884	4972	20868	5558	22309	5987
H/J Engineering and technology	16168	2274	16186	2605	15537	2504	14990	2578	14491	2462
K Architecture, building and planning	4371	1044	4525	1175	4163	1220	4035	1221	3947	1310
L/M Social studies	12374	17491	13517	19667	12652	19550	12952	20194	13121	20726
N Business and administrative studies	16381	15936	18695	17620	18291	18016	17825	18256	17663	17455
P Mass communications and documentation	2265	3997	2751	4629	2654	4727	2784	5035	3042	5486
Q/R/T Languages and related disciplines	4657	11384	4961	12105	4555	11652	4373	11179	4442	11062
V Humanities	4471	5022	4567	5356	4387	4981	4408	5076	4536	5152
W Creative arts	3770	5289	11667	14637	11096	14764	11909	15930	12963	17574
X Education	7094	11890	2306	9420	2963	9996	2219	9693	2287	10015
Y Combined arts	2047	4343	2429	4897	2241	4802	2197	4732	2345	4938
Y Combined sciences	3137	2090	3602	2541	3574	2434	3294	2433	3633	2795
Y Combined social studies	1215	1263	1479	1552	1408	1637	1444	1591	1463	1683
Y Science combined with social studies/ arts	3813	3584	5507	4719	5828	4845	6464	5127	6738	5893
Y Social studies combined with arts	2689	4483	3099	5075	2944	5292	3232	5754	3228	6027
Z Other general and combined studies	2777	5057	3088	5645	2422	4613	2517	4498	1717	3350
Grand Total	124188	126532	141142	147973	138344	147668	139653	152143	141282	156034

6. APPLICANTS AND ACCEPTED APPLICANTS: *MOSAIC Lifestyle*

MOSAIC is a geodemographic tool used to classify residential postcode areas into distinct neighbourhood types based on statistical information about the people who live in them. It uses a combination of census, electoral roll, housing and financial data to classify household into the 12 groups given in the table below. Experian's labels for the lifestyle groups range from High Income Families to Country Dwellers.

Table 6A shows the number and percentage of home Access applicants and accepted applicants respectively by MOSAIC lifestyle group for 1999 and 2000 entry. It can be seen from the table, that traditionally under represented groups are well represented in the Access fraternity. The highest proportion of Access applicants and for 1999 and 2000 entry were from Victorian Low Status (17.2% and 16.8% respectively). Low Rise Council represented 12.4% of applications for 1999 entry and 12.9% for 2000. The unknown classification includes applicants accepted with incorrect or no postcode information, or

where no match for MOSAIC is available, for instance, Northern Ireland due to the differences in postcode classification.

TABLE 6A – Access Applicants and Accepted Applicants by MOSAIC Lifestyle

MOSAIC Lifestyle	Apps 1999	%	Accs 1999	%	Apps 2000	%	Accs 2000	%
A High Income Families	1253	7.4%	924	8.2%	1177	6.9%	838	7.3%
B Suburban Semis	1482	8.7%	1057	9.4%	1456	8.5%	1026	9.0%
C Blue Collar Owners	1585	9.3%	1110	9.9%	1672	9.8%	1130	9.9%
D Low Rise Council	2106	12.4%	1389	12.3%	2195	12.9%	1423	12.5%
E Council Flats	1554	9.1%	934	8.3%	1594	9.3%	1004	8.8%
F Victorian Low Status	2918	17.2%	1770	15.7%	2865	16.8%	1812	15.9%
G Town Houses and Flats	1627	9.6%	1090	9.7%	1634	9.6%	1151	10.1%
H Stylish Singles	1638	9.6%	1055	9.4%	1521	8.9%	960	8.4%
I Independent Elders	512	3.0%	342	3.0%	527	3.1%	352	3.1%
J Mortgaged Families	1078	6.3%	715	6.3%	1174	6.9%	819	7.2%
K Country Dwellers	627	3.7%	441	3.9%	641	3.8%	475	4.2%
L Institutional Areas	50	0.3%	29	0.3%	59	0.3%	33	0.3%
X Not Known	583	3.4%	413	3.7%	542	3.2%	379	3.3%
Grand Total	17013	100.0%	11269	100.0%	17057	100.0%	11402	100.0%

TABLES 6B/C – by Gender 1999 and 2000 entry

Applicants 1999 entry

Accepted Applicants 1999 entry

MOSAIC Lifestyle	Male	%	Female	%	Male	%	Female	%
A High Income Families	385	2.19%	868	4.95%	281	2.42%	643	5.54%
B Suburban Semis	504	2.87%	978	5.58%	339	2.92%	718	6.19%
C Blue Collar Owners	514	2.93%	1071	6.11%	349	3.01%	761	6.56%
D Low Rise Council	636	3.63%	1470	8.38%	423	3.65%	966	8.33%
E Council Flats	579	3.30%	975	5.56%	350	3.02%	584	5.03%
F Victorian Low Status	1240	7.07%	1678	9.57%	743	6.40%	1027	8.85%
G Town Houses and Flats	576	3.28%	1051	5.99%	388	3.34%	702	6.05%
H Stylish Singles	710	4.05%	928	5.29%	451	3.89%	604	5.21%
I Independent Elders	175	1.00%	337	1.92%	121	1.04%	221	1.90%
J Mortgaged Families	286	1.63%	792	4.51%	192	1.65%	523	4.51%
K Country Dwellers	193	1.10%	434	2.47%	142	1.22%	299	2.58%
L Institutional Areas	11	0.06%	39	0.22%	7	0.06%	22	0.19%
X Not Known	520	2.96%	592	3.37%	354	3.05%	392	3.38%
Grand Total	6329	36.08%	11213	63.92%	4140	35.68%	7462	64.32%

Applicants 2000 entry

Accepted Applicants 2000 entry

MOSAIC Lifestyle	Male	%	Female	%	Male	%	Female	%
------------------	------	---	--------	---	------	---	--------	---

A High Income Families	340	1.94%	837	4.77%	233	1.98%	605	5.15%
B Suburban Semis	481	2.74%	975	5.55%	327	2.78%	699	5.95%
C Blue Collar Owners	483	2.75%	1189	6.77%	339	2.89%	791	6.73%
D Low Rise Council	609	3.47%	1586	9.03%	396	3.37%	1027	8.74%
E Council Flats	633	3.60%	961	5.47%	421	3.58%	583	4.96%
F Victorian Low Status	1120	6.38%	1745	9.94%	718	6.11%	1094	9.31%
G Town Houses and Flats	573	3.26%	1061	6.04%	405	3.45%	746	6.35%
H Stylish Singles	635	3.62%	886	5.05%	396	3.37%	564	4.80%
I Independent Elders	198	1.13%	329	1.87%	139	1.18%	213	1.81%
J Mortgaged Families	306	1.74%	868	4.94%	217	1.85%	602	5.12%
K Country Dwellers	189	1.08%	452	2.57%	146	1.24%	329	2.80%
L Institutional Areas	5	0.03%	54	0.31%	3	0.03%	30	0.26%
X Not Known	474	2.70%	570	3.25%	326	2.77%	399	3.40%
Grand Total	6046	34.43%	11513	65.57%	4066	34.61%	7682	65.39%

TABLE 6D/E – MOSAIC Lifestyle by Ethnic Origin 1999 and 2000 entry

Applicants 1999

Accepted Applicants 1999

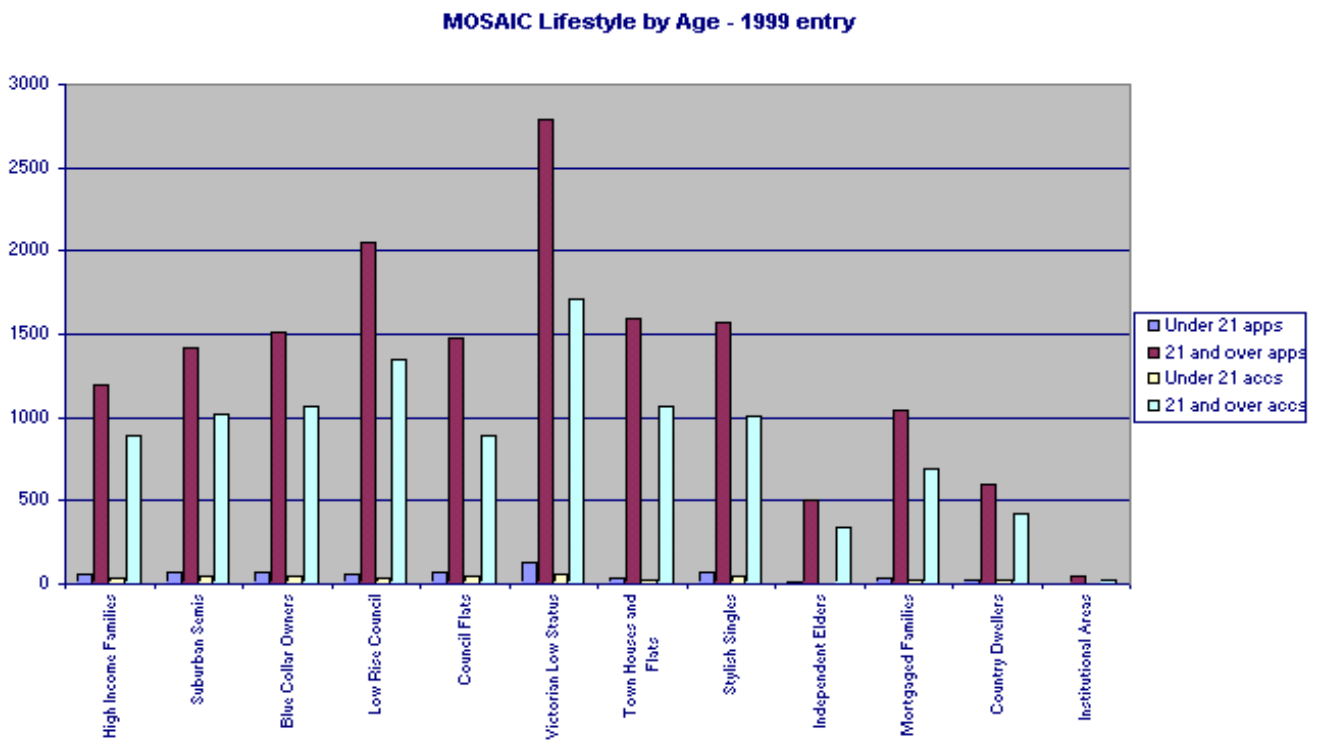
MOSAIC Lifestyle	White	%	Non White	%	Not Known	%	White	%	Non White	%	Not Known	%
A High Income Families	975	5.56%	80	0.46%	198	1.13%	730	6.29%	61	0.53%	133	1.15%
B Suburban Semis	1112	6.34%	143	0.82%	227	1.29%	817	7.04%	86	0.74%	154	1.33%
C Blue Collar Owners	1235	7.04%	134	0.76%	216	1.23%	900	7.76%	80	0.69%	130	1.12%
D Low Rise Council	1469	8.37%	270	1.54%	367	2.09%	1003	8.65%	163	1.40%	223	1.92%
E Council Flats	578	3.29%	643	3.67%	333	1.90%	372	3.21%	372	3.21%	190	1.64%
F Victorian Low Status	1270	7.24%	1075	6.13%	573	3.27%	857	7.39%	586	5.05%	327	2.82%
G Town Houses and Flats	1148	6.54%	209	1.19%	270	1.54%	792	6.83%	124	1.07%	174	1.50%
H Stylish Singles	837	4.77%	428	2.44%	373	2.13%	570	4.91%	255	2.20%	230	1.98%
I Independent Elders	362	2.06%	66	0.38%	84	0.48%	251	2.16%	39	0.34%	52	0.45%
J Mortgaged Families	799	4.55%	124	0.71%	155	0.88%	538	4.64%	76	0.66%	101	0.87%
K Country Dwellers	534	3.04%	11	0.06%	82	0.47%	374	3.22%	7	0.06%	60	0.52%
L Institutional Areas	41	0.23%	5	0.03%	4	0.02%	22	0.19%	5	0.04%	2	0.02%
X Not Known	355	2.02%	89	0.51%	668	3.81%	251	2.16%	65	0.56%	430	3.71%
Grand Total	10715	61.08%	3277	18.68%	3550	20.24%	7477	64.45%	1919	16.54%	2206	19.01%

Accepted Applicants 2000 entry

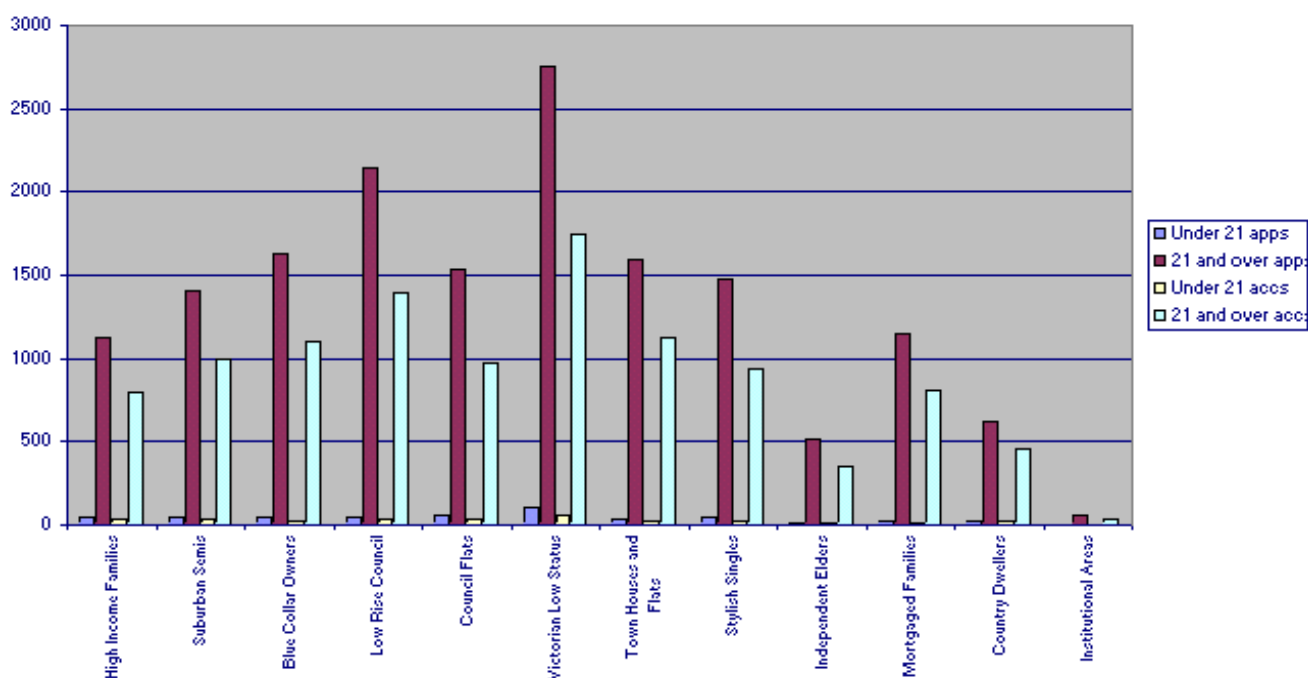
Accepted Applicants 2000

MOSAIC Lifestyle	White	%	Non White	%	Not Known	%	White	%	Non White	%	Not Known	%
A High Income Families	922	5.25%	90	0.51%	165	0.94%	682	5.81%	50	0.43%	106	0.90%
B Suburban Semis	1077	6.13%	150	0.85%	229	1.30%	791	6.73%	85	0.72%	150	1.28%
C Blue Collar Owners	1335	7.60%	132	0.75%	205	1.17%	929	7.91%	71	0.60%	130	1.11%
D Low Rise Council	1593	9.07%	289	1.65%	313	1.78%	1062	9.04%	167	1.42%	194	1.65%
E Council Flats	570	3.25%	689	3.92%	335	1.91%	395	3.36%	409	3.48%	200	1.70%
F Victorian Low Status	1199	6.83%	1046	5.96%	620	3.53%	832	7.08%	619	5.27%	361	3.07%
G Town Houses and Flats	1136	6.47%	179	1.02%	319	1.82%	836	7.12%	110	0.94%	205	1.74%
H Stylish Singles	753	4.29%	386	2.20%	382	2.18%	514	4.38%	222	1.89%	224	1.91%
I Independent Elders	364	2.07%	58	0.33%	105	0.60%	259	2.20%	33	0.28%	60	0.51%
J Mortgaged Families	853	4.86%	151	0.86%	170	0.97%	616	5.24%	96	0.82%	107	0.91%
K Country Dwellers	539	3.07%	12	0.07%	90	0.51%	411	3.50%	8	0.07%	56	0.48%
L Institutional Areas	44	0.25%	6	0.03%	9	0.05%	24	0.20%	5	0.04%	4	0.03%
X Not Known	357	2.03%	82	0.47%	605	3.45%	261	2.22%	53	0.45%	411	3.50%
Grand Total	10742	61.18%	3270	18.62%	3547	20.20%	7612	64.79%	1928	16.41%	2208	18.79%

GRAPH 6A/B – MOSAIC Lifestyle by Age 1999 and 2000 entry



MOSAIC Lifestyle by Age - 2000 entry



Conclusion

The Access qualification has established itself as a main entry route into higher education. The initial aim of the Access movement – to make higher education accessible to those who, through traditional means, were not gaining entry, has succeeded. The success of Access programmes in attracting women is undeniable, as is its ability to attract mature candidates who, for various reasons, have been unable to enter higher education earlier in their lives. In particular, it is with great pleasure that the success of attracting female members of black minority communities is noted. Members of this group, in general, are not as well represented in higher education as are members of other groups.

The 'unfinished business' that the founder of the Access movement, Philip Jones, was so keen to see fulfilled, is being realised. Access is for those who constantly find themselves dealt with less favourably than others and the distinctive characteristics of Access applicants, compared to other applicants, confirms the appropriateness of the qualification. The one group that is still under-represented, both applying to and entering higher education, however, is the male black population. To a degree, Access provision is starting to attract this group too, but more needs to be done. The recent decline in Access applicants is not encouraging and every effort is needed to encourage more from the under-represented sections of society to use this route into higher education.