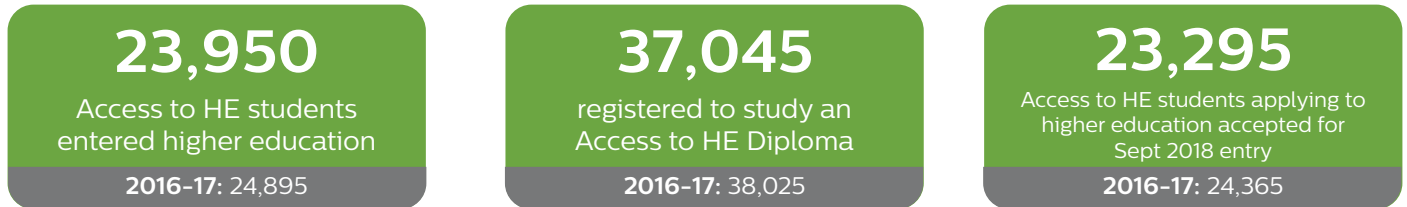


Key Statistics 2017-18

This summary of 2017-18 key statistics demonstrates the continued success of the Access to HE Diploma in enabling adults to enter and succeed in higher education, and to support local and national skills needs.

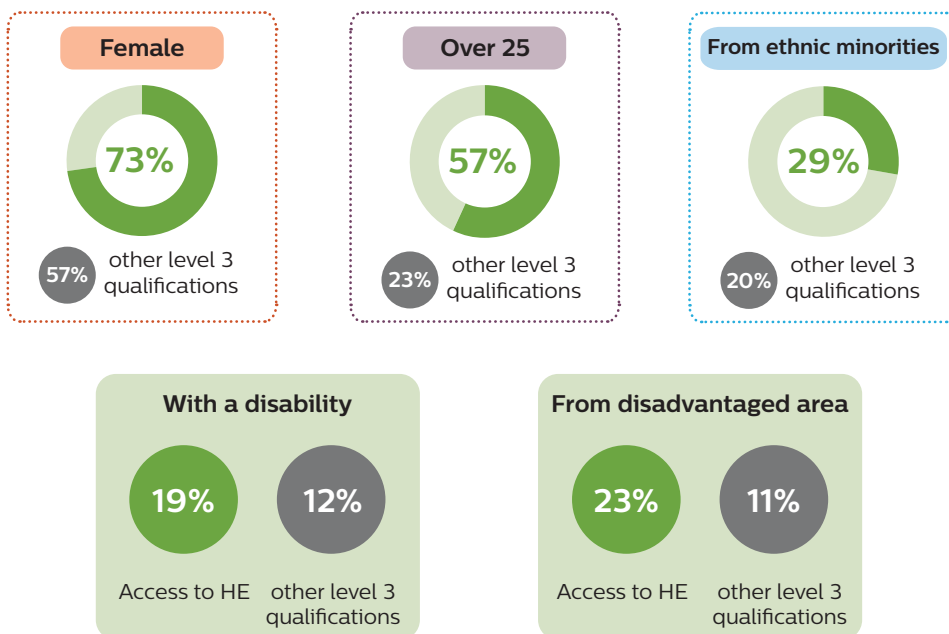
The Access to HE Diploma is a widely-recognised level 3 qualification that provides opportunities for adults to transition to enter higher education. It also offers chances for adults wishing to re-train for a second graduate-entry profession by delivering locally-devised, flexible courses across the UK.

In 2017-18:

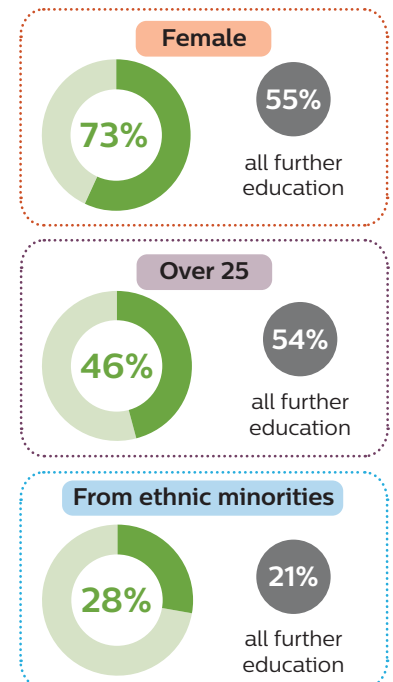


Access to HE students

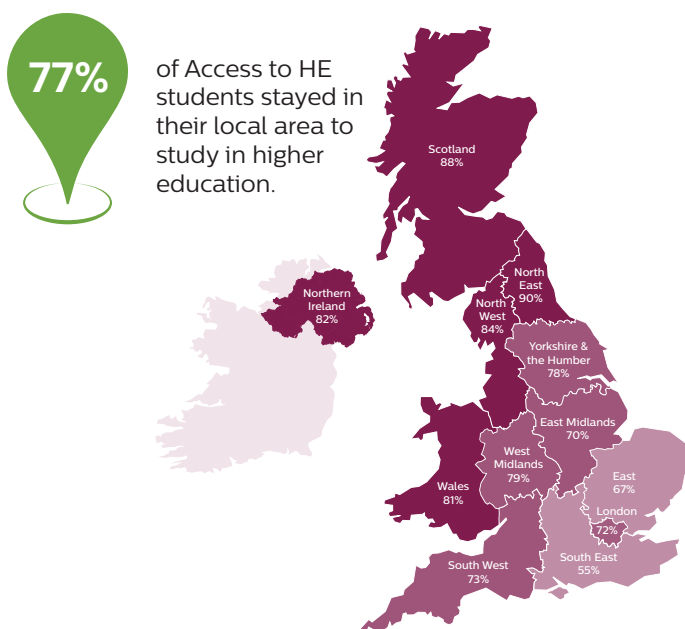
Entering higher education with an Access to HE Diploma in September 2017



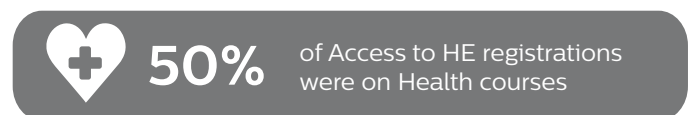
Registered to study an Access to HE Diploma in 2017-18



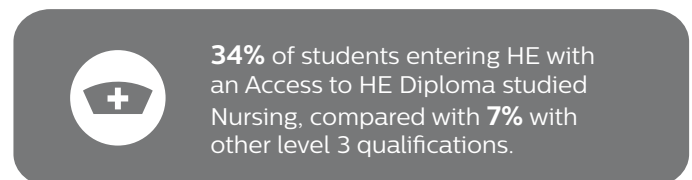
Going to university



What do they study?

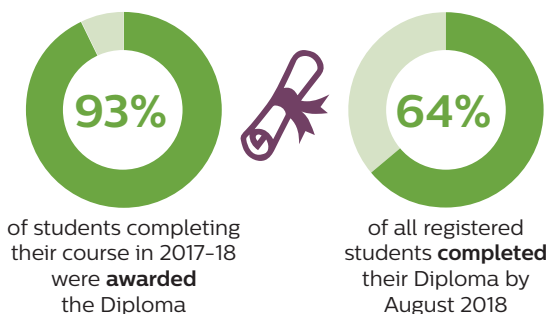


Top 5 HE subjects studied by students with an Access to HE Diploma



What results do they get?

Access to HE



At University

	Access to HE	Other qualifications
First	25.6%	26.4%
2:1	42.1%	46.1%
2:2	23.9%	18%

9.7% of mature entrants with an Access to HE Diploma were no longer in higher education study the following year compared to 14.4% of mature entrants with other level 3 qualifications

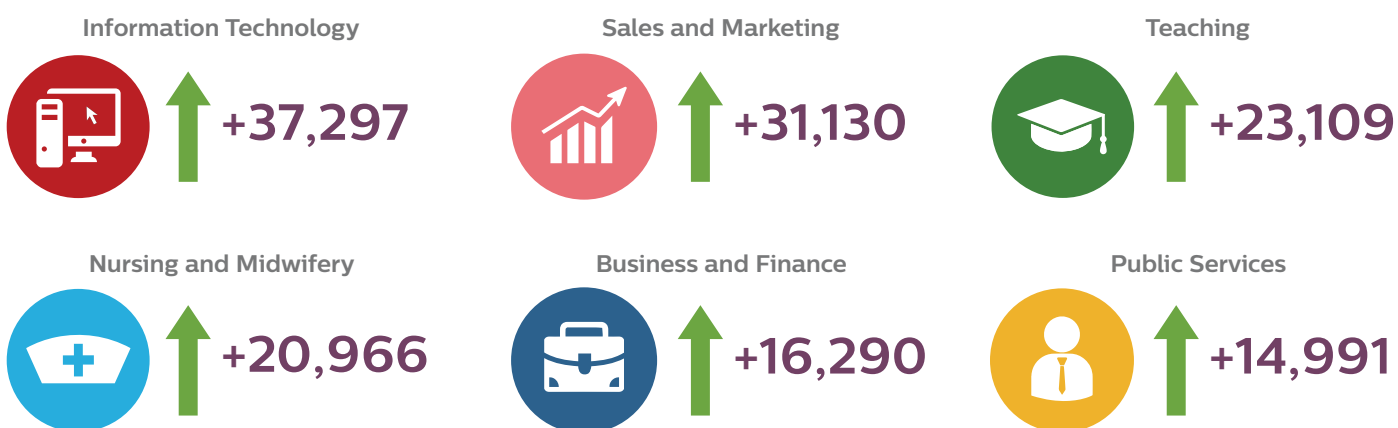
Where are they now?

90% of graduates with an Access to HE Diploma were employed or in further study 6 months after graduation

compared with 90.7% with other level 3 qualifications.

Fastest growing occupations 2018-2023

A number of occupations for those graduating from higher education are predicted to grow over the next 5 years including:



Source: Emsi 2019 Q1 data

Making sense of the figures

The data used in this publication is provided from a variety of sources, as detailed below. Numbers are rounded to the nearest five.



QAA - full and part-time students on QAA-recognised Access to HE Diplomas in England and Wales. Data is provided by the 11 AVAs that award the Diploma and the Education and Skills Funding Agency for publicly-funded Diplomas in England. Data relates to the 2017-18 academic year.



UCAS - applicants and accepted applicants to full-time HE courses. It includes applicants to HE courses provided by FE institutions but does not include applicants to part-time HE courses. Data relates to the 2017-18 entry cycle.



HESA - students entering undergraduate programmes who took an Access to HE course. The data includes full and part-time students registered on the first year of undergraduate courses but excludes those enrolled on directly-funded HE courses in FE institutions. Data relates to students who took an Access to HE course before 2017-18 - a different cohort from that reported elsewhere.

Further information

Our other statistical reports provide a more in-depth analysis of the statistics and data, available on the Access to HE website: www.accesstohe.ac.uk